

Media: air – water – gas – oil
 Pressure range: 0 to 63 Bar max
 Media temp: -20°C to +80°C max
 Ambient temp: -20°C to +70°C
 Mounting: Any position
 Cycles: 20,000
 Opening/Closing: 10-20 Sec
 Duty cycle: 75% (min 1 min stop between cycles for cooling)

Actuated St.St. Ball Valve

1/4 – 4”
 Open-Close, Failsafe or Modulating
 ISO5211 2 WAY DIRECT
 0 – 63 Bar
TYPE CNX--3S



PRESSURE

Ø Port BSPT	Orifice (mm)	Actuator	Min (Bar)	Max at Ambient Temp (Bar)	Part Number
1/4	15	CNX20	0	63	CNX20-3S02 + voltage
3/8	15	CNX20	0	63	CNX20-3S03 + voltage
1/2	15	CNX20	0	63	CNX20-3S04 + voltage
3/4	20	CNX20	0	63	CNX20-3S06 + voltage
1	25	CNX20	0	63	CNX20-3S08 + voltage
1 1/4	32	CNX60	0	63	CNX60-3S12 + voltage
1 1/2	40	CNX60	0	63	CNX60-3S14 + voltage
2	50	CNX60	0	63	CNX60-3S20 + voltage
2 1/2	65	CNX60	0	63	CNX60-3S24 + voltage
3	80	CNX110	0	63	CNX110-3S28 + voltage
4	100	CNX110	0	63	CNX110-3S32 + voltage

OPTIONS

Basic actuator, Visual Position Indicator, Manual Over Ride, 2x volt free open + closed contact feedback cam adjustable switches
 Anti-condensation heater
 Aluminium cover
 Relay output with alarm
 Smart actuator, additional LED & button control for over-ride, dead band; speed control, closed position & reverse acting adjustments

CNX20 Smart

Smart actuator
 Modulating 4-20mAmp
 Wireless
 Modbus
 High speed actuator 24VDC only
 Failsafe 1/4-1" valve 24v= 110/230~

CNX60 Smart

Smart actuator
 Modulating 4-20mAmp
 Wireless
 Modbus
 High speed actuator 24VDC only
 Failsafe 1 1/4-2 1/2" 24v= 110/230~

CNX110 Smart

Smart actuator
 Modulating 4-20mAmp
 Wireless
 Modbus
 High speed actuator 24VDC only
 Failsafe 3" & 4" valve 24v= 110/230~

TECHNICAL DATA

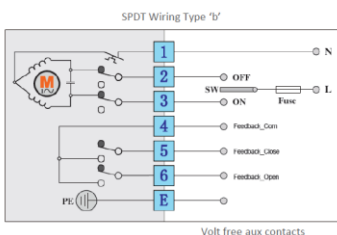
CNX	Rated Voltage	Voltage Range (Volts)	Torque (NM)		Power Consumption				Run time (Sec)
			Max Break	Working	Run Watts	Hold Watts	Max Current	Fuse (Amp)	
20	DC24	22 – 28	20	15	9.6	0.3	500mA for	2	10
20	AC24	22 – 28	20	15	10.8	0	450mA for 5	2	15
20	AC110	90 – 130	20	15	15	0	135mA for 5	1	
20	AC230	190 – 250	20	15	13.2	0	60mA for 5	1	
60	DC24	21.6-26.4	60	60	36	1.5	2.5 for 5ms	4	
60	AC24	22-28	60	60	50	0	2.5 for 5ms	10	
60	AC110	90-130	60	60	55	0	0.6 for 5ms	5	
60	AC230	190-250	60	60	55	0	0.3A for 5ms	2	
110	DC24	21.6-26.4	110	110	36	1.5	2.5 for 5ms	4	
110	AC24	22-28	110	110	50	0	2.5 for 5ms	10	
110	AC110	90-130	110	110	55	0	0.6 for 5ms	5	
110	AC230	190-250	110	110	55	0	0.3 for 5ms	2	

CONSTRUCTION

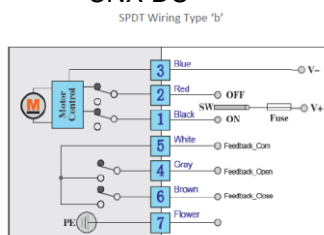
Valve Body: full flow 3 piece stainless steel 1.4408, ball stainless steel 1.4408, seals Viton, seats RPTFE, stem 316 stainless
 CNX Actuator: ABS Engineering Plastic

WIRING

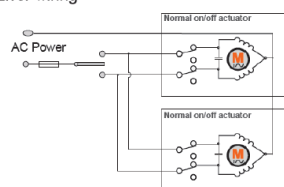
CNX AC



CNX DC



❌ Error wiring



✅ Right wiring

