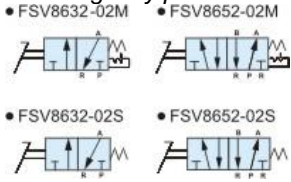


Media: air
 Pressure range: 0 to 9 Bar max
 Media temperature: -10°C +60°C max
 Ambient temperature: -10° to +60°C
 Mounting: any position



3/2 5/2 Foot Pedal

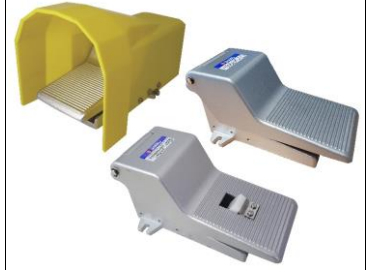
1/4"

S/RETURN + DETENT

3/2 5/2 WAY MECHANICAL

0 – 9 Bar

TYPE FSV



PRESSURE

| Ø Port | Function | Operation | Foot Guard | Pressure Rating (Bar) | | Part Number |
|------------------------|----------|---------------|------------|-----------------------|-----|--------------|
| | | | | Min | Max | |
| WITHOUT GUARD | | | | | | |
| 1/4 | 3/2 | Spring Return | NO | 0 | 9 | FSV8632-02S |
| 1/4 | 3/2 | Detent/Latch | NO | 0 | 9 | FSV8632-02M |
| 1/4 | 5/2 | Spring Return | NO | 0 | 9 | FSV8652-02S |
| 1/4 | 5/2 | Detent/Latch | NO | 0 | 9 | FSV8652-02M |
| WITH FOOT GUARD | | | | | | |
| 1/4 | 3/2 | Spring Return | YES | 0 | 9 | FSV8632-02SF |
| 1/4 | 3/2 | Detent/Latch | YES | 0 | 9 | FSV8632-02MF |
| 1/4 | 5/2 | Spring Return | YES | 0 | 9 | FSV8652-02SF |
| 1/4 | 5/2 | Detent/Latch | YES | 0 | 9 | FSV8652-02MF |

OPTIONS

NPT Thread
 With foot guard (F) or without foot guard, 3/2 (FSV8632) or 5/2 way (FSV8652), Spring return (S) or mechanical detent / latch (M)

CONSTRUCTION

Body : Aluminium Alloy
 Internal parts : Stainless steel
 Foot guard: Polycarbonate
 Test pressure: 10 Bar

REPAIR KIT

Foot Guard

Valve part number + foot guard

OVERALL DIMENSIONS

