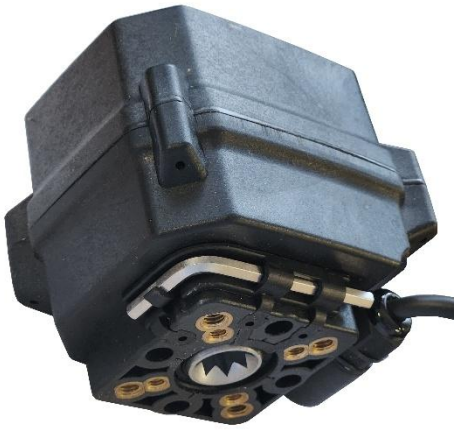


Connexion Developments Launches High-Speed ABVM and ABV Series Motorised Ball Valves



Connexion Developments Ltd is proud to introduce the next generation of motorised ball valves—the **ABVM Series** (¼"–1") and **ABV Series** (1¼"–2")—designed to deliver exceptionally fast actuation speeds of less than 1 to 2 seconds and outstanding long-term reliability.

Engineered for high-performance applications where space is limited and operational precision is critical, both series feature robust 304 stainless steel bodies, WRAS approval for potable water use in the UK, and lifecycle durability rated to over 50,000 operations at 100% duty cycle.

The **ABV Series** includes ISO5211-compliant models offering:

- **12VDC or 24VDC** power open/close actuation
- **12–24VDC failsafe return** on power loss
- **IP68 ingress protection** for demanding environments
- Visual position indication
- Volt-free end-of-travel position switches
- Manual override as standard

The **ABVM Series** is available in:

- **9–24V AC/DC** configuration via integrated multi-voltage technology
- **IP67 ingress protection**
- Visual position indication
- Optional volt-free position feedback (open/close)
- Optional Manual override available on low-voltage models

Key Features:

- **WRAS approved** for potable water
- **Fast actuation:** 1–2 seconds
- **Durable stainless steel construction**
- **Sealing options:** EPDM + PTFE or FKM + PTFE
- **Manual override and position feedback** (standard on ABV, optional on ABVM)
- **Power open/close** via third-wire control (ABVM)

Compatible with a broad range of media—including air, water, oil, and gas—the ABVM and ABV Series are pressure-rated to 10 bar and suitable for media temperatures ranging from -15°C to +100°C. These valves are ideally suited for use in automation, HVAC, water treatment, and process control systems.

For further information or to request technical datasheets, please contact **Connexion Developments Ltd** at www.solenoid-valve.world.