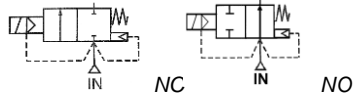


Media: steam - air - water - gas - light oil  
 Pressure range: 0.5 to 10 Bar max  
 Media temperature: +185°C max  
 Ambient temp: -10°C to +50°C max  
 Media viscosity: 20 centistokes max  
 Mounting: coil upright  
 Suitable for high frequency applications



# 2/2 Stainless Steam

1/2 - 2  
 N/CLOSED + N/OPEN  
 2 WAY SERVO ASSIST  
 0.5 - 10 Bar  
 TYPE SUS



### PRESSURE

Ø Port BSP	Ø Orifice (mm)	Flow Kv Ltr/min	Pressure Rating (Bar) ΔP		Part Number
			Min	Max	
1/2	17	67	0.5	10	SUS15 + voltage
3/4	17	100	0.5	10	SUS20 + voltage
1	22	200	0.5	10	SUS25 + voltage
1 1/4	30	300	1	10	SUS35 + voltage
1 1/2	30	367	1	10	SUS40 + voltage
2	50	800	1	10	SUS50 + voltage

### OPTIONS

IP65 Coil & Connector PG9 - DIN 43650 A  
 BSPT + NPT Threads  
 Normally Open (No ATEX option)  
 ATEX 22003EX Coil: ATEX EExmIIT4 II 2G & 2D IP65 T130°C (Type SKSXX)

### ELECTRICAL DATA

Voltage (-10% + 10%) Continuous duty 90%	Coil	Power Consumption		Insulation class	Enclosure	Electrical connections
		Inrush	Holding			
~ 24 - 110 - 230 - 380 (50 or 60 Hz)	WPC2D	40VA	24.4VA	H 180°C	IP65 with Connector	3 spades DIN43650A DIN40050 VDE0110
= 12 - 24 (DC)		18 Watts				

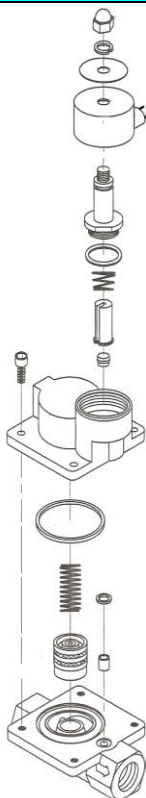
### CONSTRUCTION

Body: Forged 316 stainless steel (CF8M)  
 Tube 304 stainless steel, armature 430F stainless steel  
 Shading ring: copper  
 Seals and gaskets: PTFE  
 Moulded coil: Resin

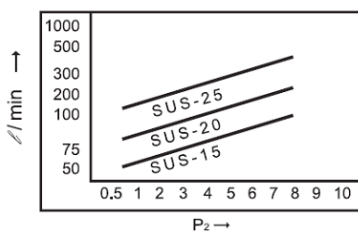
### REPAIR KIT

Coil	WPC2D + voltage
Armature	SP + Valve Part Number -ARMATURE
Piston	SP + Valve Part Number -PISTON

### OVERALL DIMENSIONS



#### SUS-15, 20, 25 Water



Model	L	H	D	Kg
SUS15	84	115	48	1.38
SUS20	84	120	48	1.43
SUS25	98	132	48	1.88
SUS35	123	142	48	2.62
SUS40	123	146	48	2.72
SUS50	167	173	48	5.45

