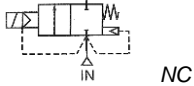


Media: slight acid/ alkali – fluid – gas – vacuum 10⁻⁶ torr
 Pressure range: 0 to 10 Bar max
 Media temperature: 120°C max
 Ambient temperature: -10°C to +60°C max
 Media viscosity: 50 centistokes max
 Mounting: coil upright
 Opening Closing time: 150 mSec Max



2/2 Stainless

3/8 – 2

NORMALLY CLOSED

2 WAY ZERO RATED

0 – 10 Bar

TYPE ADS14-50



PRESSURE

Ø Port BSP	Ø Orifice (mm)	Flow Kv Ltr/Min	Pressure Rating (Bar) ΔP			Seals	Max Media Temp °C	Part Number
			Min	Max AC	Max DC			
3/8	15	64.4	0	10	7	FKM EPDM NBR	120 120 100	ADS14V + voltage ADS14E + voltage ADS14N + voltage
1/2	15	64.4	0	10	7	FKM EPDM NBR	120 120 100	ADS15V + voltage ADS15E + voltage ADS15N + voltage
3/4	20	133	0	10	7	FKM EPDM NBR	120 120 100	ADS20V + voltage ADS20E + voltage ADS20N + voltage
1	25	188.8	0	10	7	FKM EPDM NBR	120 120 100	ADS25V + voltage ADS25E + voltage ADS25N + voltage
1 1/4	35	371.8	0	10	7	FKM EPDM NBR	120 120 100	ADS35V + voltage ADS35E + voltage ADS35N + voltage
1 1/2	35	400	0	10	7	FKM EPDM NBR	120 120 100	ADS40V + voltage ADS40E + voltage ADS40N + voltage
2	50	686.4	0	7	4.9	FKM EPDM NBR	120 120 100	ADS50V + voltage ADS50E + voltage ADS50N + voltage

OPTIONS

IP68 (EN60529:1991+A1:2000) UL & CSA approved coil & IP67 LED connector DIN 43650 A
 Silver shading ring (ADSxxxS)
 NPT, BSPT Thread
 ATEX EExmII T4 II 2G & 2D IP65 T130°C Coil (Pressure 3 Bar Max)
 Manual Override (Top Mounted Knob Lift and Turn or Bottom entry T Bar)
 VST, Silicone, HNBR, Neoprene, ECO or Hypalon Seals
 Other special options and degreasing

Included

ELECTRICAL DATA

Voltage (-10% + 10%) Continuous duty 100%		Coil	Power Consumption		Insulation class	Enclosure	Electrical connections
~	=		Inrush	Holding			
~	24 - 110 - 230 - 380 (50 or 60 Hz)	WPG2	18.7VA	15.3VA	H 180°C	IP 67 with connector	3 spades DIN 43650 DIN 40050 VDE 0110
=	12 – 24 - 48 (DC)		18 Watts				

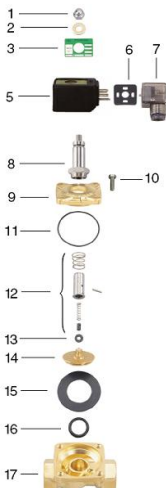
CONSTRUCTION

Body: 316 stainless steel (CF8M)
 Tube + Spring 304 Stainless Armature: 430F Stainless steel
 Seals and gaskets: FKM (Optional EPDM, NBR, Silicone, VST, HNBR, ECO, Neoprene and Hypalon)
 Moulded coil: Resin

REPAIR KIT

Coil	WPG2 + voltage
Diaphragm	SP215 + Valve Part Number

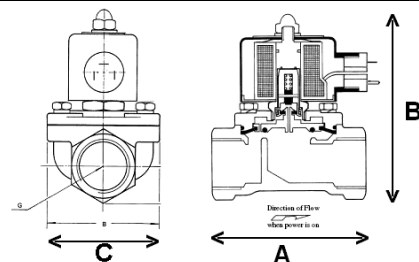
OVERALL DIMENSIONS



No.	Part No	Description
1	SP201*	Nut
2	SP202*	Washer
3	SP203*	Nameplate
5	WPG2*	Coil
6	SP206*	Gasket
7	SP207*	Connector
8	SP208*	Core Tube
9	SP209*	Valve Bonnet
10	SP210*	Bolt
11	SP211*	Bonnet O Ring
12	SP212*	Armature Assembly
13	SP213*	Diaphragm Base Kit
14	SP214*	Diaphragm Base
15	SP215*	Diaphragm
16	SP216*	Base O Ring
17	SP217*	Valve Body

* = Valve Part Number

Model	ADS14 ADS15	ADS20	ADS25	ADS35 ADS40	ADS50
A	75	85	100	120	150
B	103	114	120	140	160
C	52	60	70	90	122
Kg	1.06	1.24	1.51	2.87	4.81



Manual Over Ride option