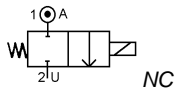


Media: air – water – gas – light oil - vacuum 10⁻⁶ torr
 Pressure range: 0 to 15 Bar max
 Media temperature: +185°C max
 Ambient temperature: -10°C to +50°C max
 Media viscosity: 50 centistokes max
 Mounting: any position
 Opening / Closing time: 20 mSec Max



2/2 Stainless

1/8 - 1/2
 NORMALLY CLOSED
 2 WAY DIRECT ACTING
 0 – 15 Bar
 TYPE ADS612



PRESSURE

| Ø Port BSP | Ø Orifice (mm) | Coil | Flow Kv Ltr/min | Pressure Rating (Bar) ΔP | | | Seals | Part Number |
|------------|----------------|------|-----------------|--------------------------|--------|--------|---------------------------------------|----------------------------|
| | | | | Min | Max AC | Max DC | | |
| 1/8 | 3.0 | WPG1 | 3.7 | 0 | 10 | 7 | NBR +100°C Max | ADS6A + seal + voltage |
| | 4.0 | | 8.3 | 0 | 7 | 5 | | ADS6B + seal + voltage |
| | 5.0 | | 9.2 | 0 | 5 | 3.5 | | ADS6C + seal + voltage |
| 1/4 | 3.0 | | 3.7 | 0 | 10 | 7 | | ADS8A + seal + voltage |
| | 4.0 | | 8.3 | 0 | 7 | 5 | | ADS8B + seal + voltage |
| | 5.0 | | 9.2 | 0 | 5 | 3.5 | | ADS8C + seal + voltage |
| 3/8 | 4.0 | WPG2 | 3.7 | 0 | 10 | 7 | Silicone EPDM FKM +120°C Max | ADS10A + seal + voltage |
| | 6.0 | | 11.3 | 0 | 5 | 3.5 | | ADS10B + seal + voltage |
| | 8.0 | | 13.9 | 0 | 2 | 1.4 | | ADS10C + seal + voltage |
| | WPA3C | 4.0 | 3.7 | 0 | 15 | 10 | | ADS10A-C3 + seal + voltage |
| | | 6.0 | 11.3 | 0 | 7 | 5 | | ADS10B-C3 + seal + voltage |
| | | 8.0 | 13.9 | 0 | 3 | 2 | | ADS10C-C3 + seal + voltage |
| 1/2 | 6.0 | WPG2 | 11.3 | 0 | 5 | 3.5 | *PTFE *VST +185°C Max | ADS12A + seal + voltage |
| | 8.0 | | 13.9 | 0 | 2 | 1.4 | | ADS12B + seal + voltage |
| | 6.0 | | 11.3 | 0 | 7 | 5 | | ADS12A-C3 + seal + voltage |
| | WPA3C | 8.0 | 13.9 | 0 | 3 | 2 | | ADS12B-C3 + seal + voltage |

OPTIONS

| | |
|--|-----------------|
| IP68 (EN60529:1991+A1:2000) UL + CSA approved coil & IP67 LED connector DIN 43650 A (Except WPA3C coil IP54) ATEX EExmII T4 II 2G & 2D IP65 T130°C (Pressure range same as WPG1 12W coil) * PTFE, VST, Neoprene, ECO, HNBR or Hypalon Seals (WPG1 coil) * PTFE, VST, Neoprene, ECO, HNBR or Hypalon Seals (WPG2/WPA3C coil) | Included |
| Silver shading ring WPG1 coil Silver shading ring WPG2/WPA3C coil Manual Override NPT Thread Other custom-made options available upon request | |

ELECTRICAL DATA

| Voltage (-10% + 15%) Continuous duty 100% | Coil | Power Consumption | | Insulation class | Enclosure | Electrical connections |
|--|-------|-------------------|---------|------------------|----------------------------|---|
| | | Inrush | Holding | | | |
| ~ 24 - 110 - 230 (50 or 60 Hz) | WPG1 | 11.2VA | 8.2VA | H 180°C | IP 67 with connector | 3 spades DIN 43650A DIN 40050 VDE 0110 |
| = 12 - 24 (DC) | | 12 Watts | | | | |
| ~ 24 - 110 - 230 (50 or 60 Hz) | WPG2 | 18.7VA | 15.3VA | | | |
| = 12 - 24 (DC) | | 18 Watts | | | | |
| ~ 24 - 110 - 230 (50 or 60 Hz) | WPA3C | 37.5VA | 27.5VA | N 200°C | IP54 | 30cm flying lead wire |
| = 12 - 24 (DC) | | 22.6 Watts | | | | |

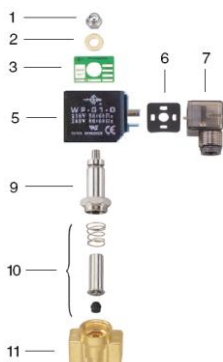
CONSTRUCTION

Body: Forged 316 stainless steel (CF8M), Tube 304 stainless steel, armature 430F stainless steel
 Shading ring: copper (Optional Silver)
 Seals and gaskets: FKM (Optional EPDM, NBR, Silicone, PTFE, VST, Neoprene, ECO, HNBR, Hypalon, Butyl IIR)
 Moulded coil: Resin

REPAIR KIT

| | |
|--------------------------|--|
| Coil | Coil (WPG1 or WPG2 or WPA3C) + voltage |
| Armature + Seal assembly | SP210 + Valve Part Number |

OVERALL DIMENSIONS



| Item | Part No | Description |
|------|---------|-------------------|
| 1 | SP201-* | Nut |
| 2 | SP202-* | Washer |
| 3 | SP203-* | Nameplate |
| 5 | WPG* | Coil |
| 6 | SP206-* | Gasket |
| 7 | SP207-* | Connector |
| 9 | SP209-* | Core Tube |
| 10 | SP210-* | Armature Assembly |
| 17 | SP211-* | Valve Body |

* = Valve Part Number

| Model | A | B | C | F | G | H | Kg |
|--------|----|----|----|----|----|------|------|
| ADS6/8 | 41 | 19 | 89 | 63 | 15 | 10.5 | 0.47 |
| ADS10 | 50 | 25 | 90 | 65 | 15 | 11.7 | 0.73 |
| ADS12 | 55 | 27 | 91 | 65 | 17 | 13 | 0.78 |

