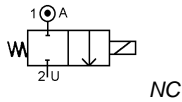


Media: air – water – gas – fluid - vacuum 10⁻⁶ torr
 Pressure range: 0 to 150 Bar max
 Media temperature: +180°C max
 Ambient temperature: -10°C to +50°C max
 Media viscosity: 50 centistokes max
 Mounting: any position
 Opening / Closing time: 20 mSec Max



2/2 Stainless

1/4

NORMALLY CLOSED 2 WAY DIRECT ACTING

0 – 150 Bar

TYPE ADS8000



PRESSURE

Ø Port BSP	Ø Orifice (mm)	Coil	Flow			Pressure Rating (Bar) ΔP			Seals	Part Number
			Kv	Ltr/min	Min	Max AC	Max DC			
1/4	1.2	WPG1	1.0	0	60	42	NBR +100°C Max	ADS8012 + seal + voltage		
	1.6		1.3	0	40	28		ADS8016 + seal + voltage		
	2.0		1.6	0	20	14		ADS8020 + seal + voltage		
	1.2	WPG2	1.0	0	120	84		Silicone EPDM FKM +120°C Max	ADS8112 + seal + voltage	
	1.6		1.3	0	60	42			ADS8116 + seal + voltage	
	2.0		1.6	0	30	21			ADS8120 + seal + voltage	
	3.0		3.7	0	20	14			ADS8130 + seal + voltage	
	4.0		8.3	0	12	8.4			ADS8140 + seal + voltage	
	5.0		9.2	0	10	7			ADS8150 + seal + voltage	
	1.2	WPA3C	1.0	0	150	105	*VST +150°C Max (All 30 Bar Max)	ADS8212 + seal + voltage		
	1.6		1.3	0	80	56		ADS8216 + seal + voltage		
	2.0		1.6	0	60	42		ADS8220 + seal + voltage		
	3.0		3.7	0	40	28		ADS8230 + seal + voltage		
	4.0		8.3	0	20	14		ADS8240 + seal + voltage		
	5.0		9.2	0	15	10.5		ADS8250 + seal + voltage		

OPTIONS

IP68 (EN60529:1991+A1:2000) UL + CSA approved coil & IP67 LED Connector DIN 43650 A (Except WPA3C coil IP54) ATEX EExIIIT4 II 2G & 2D IP65 T130°C (Pressure range same as WPG1 12W coil) * PTFE, VST, Neoprene, ECO, HNBR or Hypalon Seals (WPG1 coil ADS80) * PTFE, VST, Neoprene, ECO, HNBR or Hypalon Seals (WPG2/WPA3C coil ADS81/82)	Included
Silver shading ring WPG1 coil (ADS80xxS) Silver shading ring WPG2/WPA3C coil (ADS81/82xxS) Manual Override NPT Thread Other custom-made options available upon request	

ELECTRICAL DATA

Voltage (-10% + 15%) Continuous duty 100%	Coil	Power Consumption		Insulation class	Enclosure	Electrical connections
		Inrush	Holding			
~ 24 - 110 - 230 (50 or 60 Hz)	WPG1	11.2VA	8.2VA	H 180°C	IP 67 with connector	3 spades DIN 43650A DIN 40050 VDE 0110
= 12 - 24 (DC)		12 Watts				
~ 24 - 110 - 230 (50 or 60 Hz)	WPG2	18.7VA	15.3VA			
= 12 - 24 (DC)		18 Watts				
~ 24 - 110 - 230 (50 or 60 Hz)	WPA3C	37.5VA	27.5VA			
= 12 - 24 (DC)		22.6 Watts				
					IP54	30 cm flying lead wires

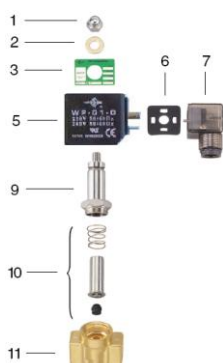
CONSTRUCTION

Body: 316 Stainless steel
 Tube 304 stainless steel, armature 430F stainless steel
 Shading ring: copper (optional Silver)
 Seals and gaskets: FKM (Optional EPDM, NBR, Silicone, PTFE, VST, Neoprene, ECO, HNBR, Hypalon, Butyl IIR)
 Moulded coil: Resin

REPAIR KIT

Coil	Coil size (WPG1 or WPG2 or WPA3C) + voltage
Armature + Seal	SP210 + Valve Part Number

OVERALL DIMENSIONS



Item	Part No	Description
1	SP201-*	Nut
2	SP202-*	Washer
3	SP203-*	Nameplate
5	WP*	Coil
6	SP206-*	Gasket
7	SP207-*	Connector
9	SP209-*	Core Tube
10	SP210-*	Armature Assembly
17	SP211-*	Valve Body

* = Valve Part Number

Model	A	B	C	F	G	H	Kg
8012-8020	41	19	85	63	15	10.5	0.47
8112-8150	41	19	88	65	15	10.5	0.66
8212-8250	41	19	94	47	15	10.5	0.66

