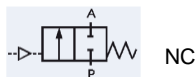


Media: water – gas – fluid – steam- vacuum  
 Pressure range: 0 to 16 Bar Max  
 Media temperature: -10°C to +200°C max  
 Ambient temperature: +5°C to +60°C  
 Media viscosity: 600 centistokes max  
 Mounting: any position  
 Pilot Media: air – water – gas  
 Pilot Pressure: 5 to 8 Bar



# Piston Stainless

## 3/8 - 3

### ANGLE SEAT PISTON VALVE

### 2 WAY AIR DIRECT ACTING

### 0 – 16 Bar

## Type ASPVSS-316



#### PRESSURE

Ø Port BSP	Function	Ø Orifice (mm)	Flow Kv Ltr/Min	Pressure (Bar)			Actuator (mm)	Part Number
				Min	1⇐2 Over Seat	1⇒2 Under seat		
3/8	N/Closed	10	75	0	16	8	40	ASPV10SS-316
1/2	N/Closed	15	90	0	16	8	40	ASPV15SS-316
3/4	N/Closed	20	167	0	16	8	50	ASPV20SS-316
1	N/Closed	25	253	0	16	8	50	ASPV25SS-316
1 1/4	N/Closed	32	383	0	16	8	63	ASPV32SS-316
1 1/2	N/Closed	40	683	0	16	8	80	ASPV40SS-316
2	N/Closed	50	1183	0	16	8	80	ASPV50SS-316
2 1/2	N/Closed	65	1800	0	16	16	100	ASPV65SS-316
3	D/Acting	80	2667	0	16	16	125	ASPV80SS-316

#### OPTIONS

Visual Position Indicator (Except 3" Double acting and Anti water Hammer flow 1 ⇒ 2 Flow under seat)  
 Normally Open Version  
 Open Position Proximity Switch 10-30vDC (normally closed only ambient +70°C Max) (PS)  
 Open and Closed mechanical position switches with LED 12-48vDC (E2)  
 Modulating intelligent 4-20mA positioner LED Indication IP65 (M1)  
 Modulating intelligent 4-20mA positioner LED Screen IP66 ATEX Ex nA II CT1-4 (M2)  
 Stroke limiter – Top manual adjustment wheel (Not available in combination with other control option) (SL)  
 double acting, 3 Way, flanged, 90-degree, manifold, PA6 plastic actuator, high pressure, NPT thread + other custom options.

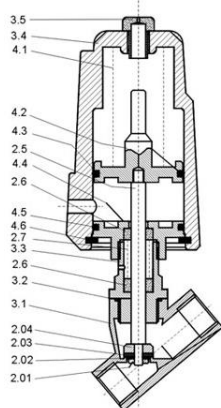
**Included**

#### CONSTRUCTION

Body, Tube, Piston and internal parts: AISI316 (CF8M) stainless steel  
 Actuator head: AISI304 stainless steel (Rotation 360°)  
 Seals and gaskets: Valve – PTFE, Actuator - FKM

#### OVERALL DIMENSIONS

Parts List	
2.01 Bolt	
2.02 Orifice Plate Seal	
2.03 Disc Seal	
2.04 Disc	
2.5 Steam	
2.6 V Seal	
2.7 Spring	
3.1 Body	
3.2 Seal Ring	
3.3 Screw connector	
3.4 Cylinder	
3.5 Cover	
4.1 Spring	
4.2 Piston	
4.3 O ring	
4.4 Bonnet	
4.5 O Ring	
4.6 Bearing Ring	



DN	Port	L	L1	SW	H	D	Act	Pilot	Kg
10	3/8	55	17	21	120	51	40	1/8	1.1
15	1/2	70	21	26.5	138	51	40	1/8	1.1
20	3/4	76	23	32	154	62	50	1/8	1.3
25	1	90	25	40	168	62	50	1/8	1.7
32	1 1/4	116	32	50	200	76	63	1/8	3.1
40	1 1/2	116	32	55.5	215	92	80	1/8	3.9
50	2	138	40	68.5	230	92	80	1/8	4.8
65	2 1/2	168	51	85	268	117	100	1/4	9.3
80	3	192	54	100	325	140	125	1/4	14.0

