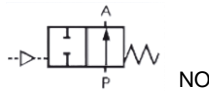


Media: water – gas – fluid – steam- vacuum
 Pressure range: 0 to 16 Bar Max
 Media temperature: -20°C to +200°C max
 Ambient temperature: -10°C to +80°C
 Media viscosity: 600 centistokes max
 Mounting: any position
 Pilot Media: air – inert gas
 Pilot Pressure: 4 to 7 Bar



Piston Stainless

3/8 - 3

ANGLE SEAT PISTON VALVE

NORMALLY OPEN

0 – 16 Bar

Type ASPVSS-316-NO



PRESSURE

Ø Port BSP	Function	Orifice (mm) Ø	Pilot Air (Bar)	Flow Kv Ltr/Min	Pressure (Bar)			Actuator (mm)	Part Number
					Min	2 ⇒ 1 Over Seat	1 ⇒ 2 Under seat Anti Hammer		
3/8	N/Open	11	3-6	58.3	0	16	16	40	ASPV10SS-316-NO
1/2	N/Open	13	3-6	63.3	0	16	16	40	ASPV15SS-316-NO
3/4	N/Open	17	3-6	113.3	0	16	16	50	ASPV20SS-316-NO
1	N/Open	24	4-6	236.7	0	12	12	50	ASPV25SS-316-NO
1 1/4	N/Open	30	4-6	390	0	8	8	63	ASPV32SS-316-NO
1 1/2	N/Open	35	4-7	480	0	16	16	80	ASPV40SS-316-NO
2	N/Open	45	4-7	780	0	16	16	80	ASPV50SS-316-NO
2 1/2	N/Open	59	4-7	1246.7	0	8	8	100	ASPV65SS-316-NO
3	N/Open	76	4-7	1783.3	0	8	8	125	ASPV80SS-316-NO

OPTIONS

Visual Position Indicator, Anti water Hammer flow 1 ⇒ 2 Flow under seat.
 Normally Closed Version
 Open and Closed mechanical position switches with LED 12-48vDC (E2)
 Flanged, Tri-clamp or weld ends, 316L body, high pressure, Plastic or Aluminium actuator + other custom options.

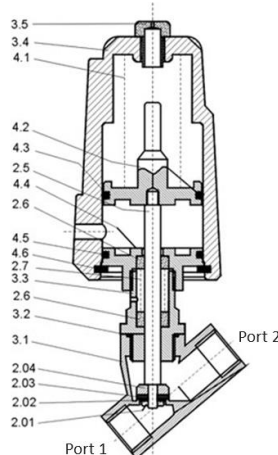
Included

CONSTRUCTION

Body, Tube, Piston and internal parts: AISI316 (CF8M) stainless steel
 Actuator head: AISI304 stainless steel (Rotation 360°)
 Seals and gaskets: Valve – PTFE, Actuator - FKM

OVERALL DIMENSIONS

Parts List	
2.01 Bolt	
2.02 Orifice Plate Seal	
2.03 Disc Seal	
2.04 Disc	
2.5 Steam	
2.6 V Seal	
2.7 Spring	
3.1 Body	
3.2 Seal Ring	
3.3 Screw connector	
3.4 Cylinder	
3.5 Cover	
4.1 Spring	
4.2 Piston	
4.3 O ring	
4.4 Bonnet	
4.5 O Ring	
4.6 Bearing Ring	



DN	Port	L	L1	SW	H	D	Act	Pilot	Kg
10	3/8	55	17	21	120	51	40	1/8	1.1
15	1/2	70	21	26.5	138	51	40	1/8	1.1
20	3/4	76	23	32	154	62	50	1/8	1.3
25	1	90	25	40	168	62	50	1/8	1.7
32	1 1/4	116	32	50	200	76	63	1/8	3.1
40	1 1/2	116	32	55.5	215	92	80	1/8	3.9
50	2	138	40	68.5	230	92	80	1/8	4.8
65	2 1/2	168	51	85	268	117	100	1/4	9.3
80	3	192	54	100	325	140	125	1/4	14.0



M1 Modulating Controller

