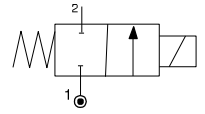


GAB 2/2-way solenoid valve of forged brass body

/sub-base mounting for general application

Direct-operated sub-base mounting Type

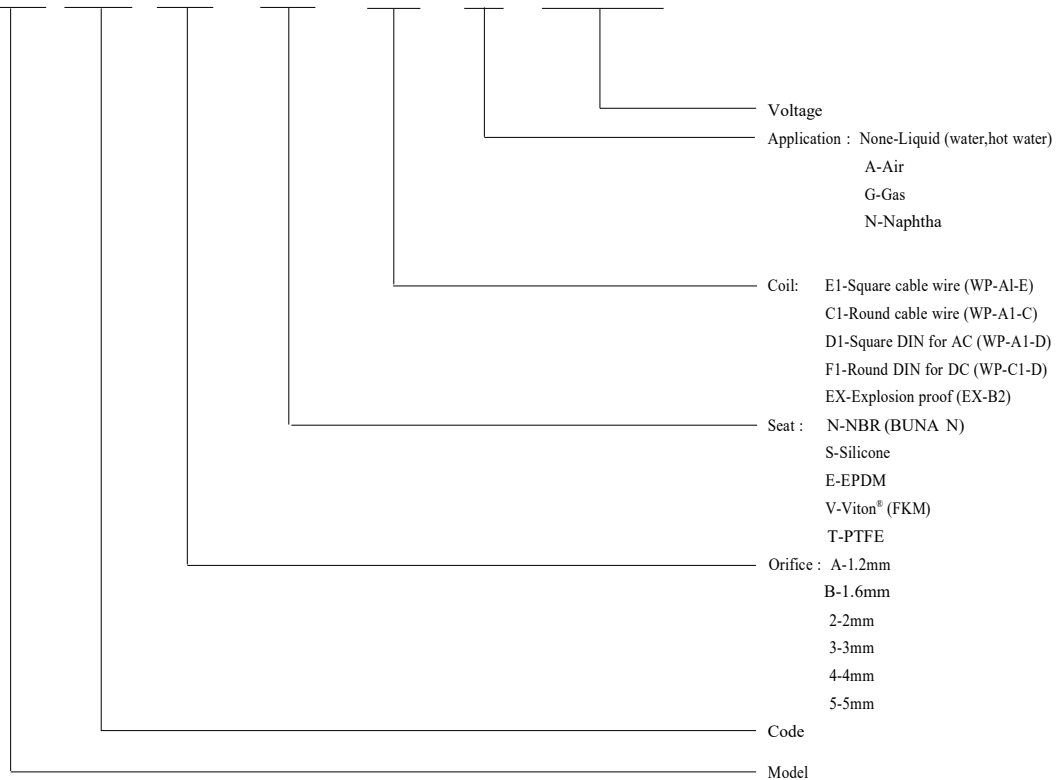
Normally closed



Model	Orifice (mm)	CV value	Fluid temp. (°C)	Seat disc	Differential pressure kg/cm ² (bar)				Wt. (kg)
					Liquid	Air	Gas	Naphtha (120°C)	
GAB-312-A	1.2	0.06	-10	NBR	0-50	0-50	0-50	0-50	0.43
GAB-312-B	1.6	0.09		Viton*	0-30	0-30	0-30	0-30	0.43
GAB-312-2	2.0	0.11		Silicone	0-15	0-15	0-15	0-15	0.43
GAB-312-3	3.0	0.26	80 (120)	PTFE	0-10	0-10	0-10	0-10	0.43
GAB-312-4	4.0	0.58		EPDM	0-6	0-6	0-6	0-6	0.43
GAB-312-5	5.0	0.64			0-3	0-3	0-3	0-3	0.43

How to order

GAB - 312 - A - N - E1 - A - 220VAC



Notes:

1. Voltage drop range is within ±10%.
2. Pressure of voltage DC is 70% of voltage AC only.
3. Selection of coil refer to page 136~139.

Inapplicable Fluids:

1. Fluids that have kinematic viscosity over 50 CST.
2. Fluids that will turn to liquid after being heated and become solid after being cooled.
3. Corrosive fluids.

GAB

2/2-way solenoid valve of forged brass body
/sub-base mounting for general application

● **GAB-312-A~5 Contour Specification Chart**

Unit:mm

