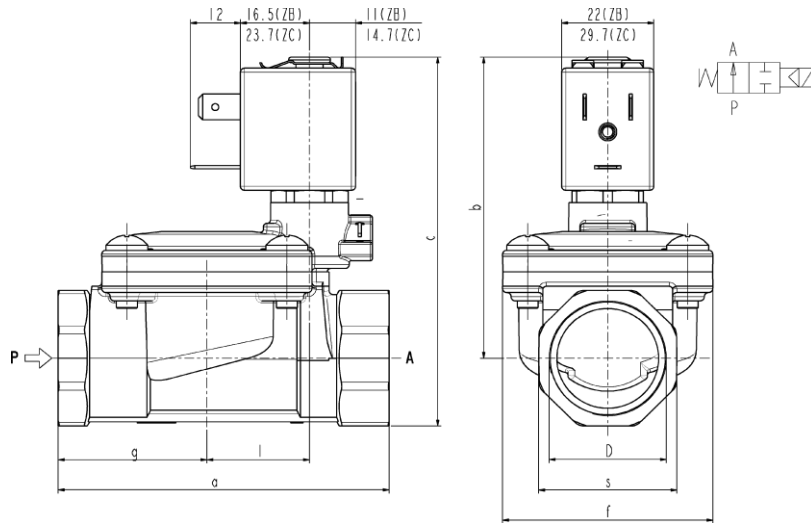


SOLENOID VALVE WORLD
2/2 – NO (Normally Open)
Pilot operated
G 3/8 ÷ G 1

L282



| D | a | b | c | f | g | l | s |
|-------|-----|------|-----|----|------|------|----|
| G 3/8 | 60 | 67 | 78 | 40 | 25,5 | 20 | 22 |
| G 1/2 | 66 | 69 | 83 | 40 | 29 | 20 | 27 |
| G 3/4 | 79 | 73,5 | 90 | 50 | 35,5 | 24,5 | 33 |
| G 1 | 105 | 86 | 107 | 71 | 46 | 28 | 42 |

► GENERAL FEATURES

Diaphragm valve, pilot operated, having full orifice.
 Suitable to shut off liquid and gaseous fluids (verify the compatibility of fluid with material in contact).

► TECHNICAL FEATURES

| | |
|---------------------------------|---|
| Maximum allowable pressure (PS) | 20bar |
| Opening time | from ~300ms to ~1500ms |
| Closing time | from ~1000ms to ~2000ms |
| Fluid temperature | -10°C +90°C (NBR) 0°C +130°C (FPM) |
| Max viscosity | 5°E (~37 cStokes or mm ² /s) |

► MATERIALS IN CONTACT WITH FLUID

| | |
|---------------------|---------------------------|
| Body | Brass |
| Sealing | NBR or FPM |
| Internal components | Brass and stainless steel |
| Seat | Brass |
| Core tube | Stainless steel |
| Shading coil | Copper |

► COIL

| | |
|------------------------|----------|
| Approval | |
| Encapsulation material | |
| Insulation class | |
| Ambient temperature | |
| Continuous duty | |
| Electric connection | |
| Protection degree | |
| Voltagess | DC AC |

| ZB10K ZC10A | ZB12K ZC12A | ZB14K ZC14A |
|--|--|--|
| / | ▲ UL and CSA | ▲ UL and CSA |
| PA fiberglass reinforced F (155°C) | PET fiberglass reinforced F (155°C) | PET fiberglass reinforced H (180°C) |
| -10°C +60°C | -10°C +60°C | -10°C +75°C |
| ED 100% | | |
| DIN46340-3polesplugconnector(EN175301-803forZC) | | |
| IP 65 (EN 60529) with plug connector | IP 67 (EN 60529) with plug connector | IP 67 (EN 60529) with plug connector |
| ZC: 12-24V (+10% -5%) | | |
| ZB: 24V/50-60Hz - 120V/60Hz - 230V/50-60Hz - 220-230/50Hz 208-240/60Hz (on request) - (+10% -15%) | | |

(Other voltages and frequencies on request)

▲ : approval valid for ZB12K – ZB14K only

| Port size ISO 228 | Orifice size (mm) | Δp min | Differential pressure (bar) | | | | Kv (m ³ /h) | Series and type | | Power absorption | | | | Sealings | Notes | Weight (kg) | | | | | |
|----------------------|-------------------------|-----------|-----------------------------|----|---------|-----|---------------------------|-----------------|------|------------------|---------|----|--|----------|-------|----------------|---|---|--|---|------|
| | | | Δp max | | | | | Valve | Coil | AC (VA) | | | DC | | | | | | | | |
| | | | Gas | | Liquids | | | | | Inrush | Holding | DC | | | | | | | | | |
| AC | DC | AC | DC | VA | VA | W | W | | | | | | | | | | | | | | |
| 3/8 | 13,5 | 0,35 | 12 | - | 12 | - | 2,5 | ZB10K ZB12K | 11,7 | 10 | 7,6 | - | NBR FPM NBR FPM NBR FPM | - | 0,32 | | | | | | |
| 1/2 | | | | | | | | | | | | | | | | | | | | | |
| 3/4 | 10 | | 10 | 5 | L282B01 | 5,5 | | | | | | | | | | - | - | - | NBR FPM NBR FPM NBR FPM | - | 0,52 |
| 1 | 12 | | 12 | 12 | L282B01 | | | | | | | | | | | | | | | | |
| 3/8 | 10 | | 10 | 5 | L282B01 | | | | | | | | | | | | | | | | |
| 1/2 | 12 | | 12 | 12 | L282B01 | | | | | | | | | | | | | | | | |
| 3/4 | 10 | | 10 | 5 | L282B01 | | | | | | | | | | | | | | | | |
| 1 | 12 | | 12 | 12 | L282B01 | | | | | | | | | | | | | | | | |

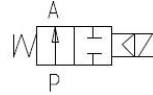
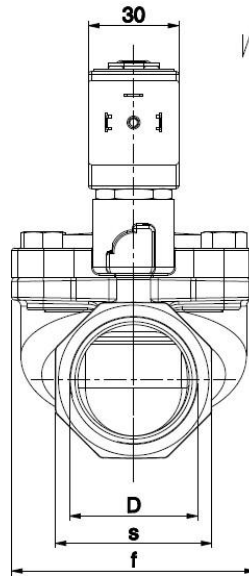
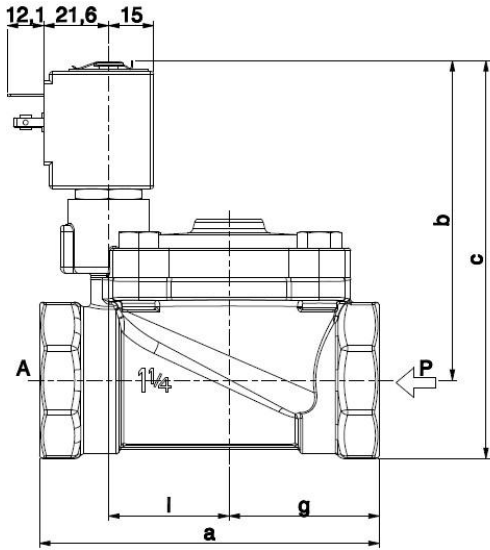
► NOTES

- Sealings: NBR=Nitrile-butylene elastomer FPM=Fluoro-carbon elastomer
- Operation with gaseous media, at high pressure without any outlet restriction, can reduce the diaphragm life.
- On request coil in class H (ZB14K – ZC14A - see § "COIL")
- On request **WRAS** certified solenoid valve with EPDM sealing (certificate n° 1411048).

SOLENOID VALVE WORLD
2/2 – NO (Normally open)
 Pilot operated
G1 ¼ ÷ 2

L282D-BIG

G 1" ¼ ÷ 2"



| D | a | b | c | f | g | l | s |
|-------|-----|-----|-----|-----|----|----|----|
| G 1 ¼ | 113 | 106 | 132 | 81 | 50 | 40 | 52 |
| G 1 ½ | 140 | 110 | 140 | 110 | 64 | 53 | 60 |
| G 2 | 157 | 114 | 150 | 110 | 72 | 53 | 72 |

► **GENERAL FEATURES**

Diaphragm valve, pilot operated, having full orifice.

Suitable to shut off liquid and gaseous fluids (verify the compatibility of fluid with materials in contact).

Not suitable for use with dangerous fluids listed in Group 1, therefore they are free from CE marking in conformity with article 3 § 3 of the European Directive 97/23/EC (Pressure Equipment Directive). certified solenoid valves (certificate n. 1411048).

► **TECHNICAL FEATURES**

| | |
|---------------------------------|---|
| Maximum allowable pressure (PS) | 10 bar |
| Opening time | from ~300ms to ~1500ms |
| Closing time | from ~1000ms to ~2000ms |
| Fluid temperature | -10°C +85°C |
| Max viscosity | 5°E (~37 cStokes or mm ² /s) |

► **MATERIALS IN CONTACT WITH FLUID**

| | |
|---------------------|---------------------------|
| Body | Brass |
| Sealing | EPDM |
| Internal components | Brass and stainless steel |
| Seat | Brass |
| Guide assembly | Stainless steel |
| Shading ring | Copper WRAS |

► **COIL**

| | |
|------------------------|---|
| Approval | UL (class F) – for UL cl.H: ZA34 |
| Continuous duty | ED 100% |
| Encapsulation material | PPS (Polyphenilsulfure) fiberglass reinforced |
| Coil insulation class | F (155°C) on request class H (180°C) |
| Ambient temperature | -10°C +50°C |
| Electric connection | DIN 46340 - 3 poles connector (EN175301-803) |
| Protection degree | IP 67 (EN 60529) with plug connector |
| Voltages | DC ZA10A : 12-24V (+10% -5%) AC ZA10YE : 24V/50Hz - 110V/50Hz (120V/60Hz) - 230V/50Hz (+10% -15%) (Other voltages and frequencies on request) |

| Port size ISO 228 | Orifice size (mm) | Differential pressure (bar) | | | | Kv (m ³ /h) | Series and type | | Power absorption | | | Sealings | Notes | Weight (kg) |
|----------------------|-------------------------|-----------------------------|----|---------|----|---------------------------|-----------------|-------|------------------|---------|-----------|----------|-------|----------------|
| | | Δp max | | | | | Valve | Coil | AC (VA) | | DC (W) | | | |
| | | Gases | | Liquids | | | | | Inrush | Holding | | | | |
| | | Δp min | AC | DC | AC | DC | L282D48 | ZA10Y | | | 28 | 20 | - | EPDM |
| G 1 ¼ | 30 | 0,50 | 10 | - | 10 | - | | | 2,510 | | | | | |
| G 1 ½ | 45 | | 9 | - | 9 | - | | | 2,990 | | | | | |
| G 2 | 45 | | - | 10 | - | 10 | | | 1,590 | | | | | |
| G 1 ¼ | 30 | | - | 9 | - | 9 | | | 2,510 | | | | | |
| G 1 ½ | 45 | | - | - | - | - | | | 2,990 | | | | | |
| G 2 | 45 | | - | - | - | - | 9 | | | | | | | |

► **NOTE**

- Sealings: EPDM = Ethylene-propylene elastomer
- Operation with gaseous fluids at high pressure without any outlet restriction can reduce the diaphragm life.
- UL approved coil (E153691)