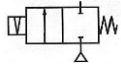


Media: air – water – light oil - vacuum 10⁻⁶ torr
 Pressure range: 0 to 3.5 Bar max
 Media temperature: 120°C max
 Ambient temperature: -20°C to +60°C max
 Media viscosity: 50 centistokes max
 Mounting: coil upright
 Opening / Closing Time: 50 mSec Max



LATCHING

2/2 Brass 3/8 – 2” LATCHING 2 WAY ZERO RATED 0 – 3.5 Bar TYPE LAD14-50



PRESSURE

Ø Port BSP	Ø Orifice (mm)	Flow Kv Ltr/ min	Pressure Rating (Bar)		Seals	Max Media Temp. °C	Part Number
			Min	Max			
3/8	15	64.4	0	3.5	NBR FKM EPDM	100 120 120	LAD14N + voltage LAD14V + voltage LAD14E + voltage
1/2	15	64.4	0	3.5	NBR FKM EPDM	100 120 120	LAD15N + voltage LAD15V + voltage LAD15E + voltage
3/4	20	133	0	3.5	NBR FKM EPDM	100 120 120	LAD20N + voltage LAD20V + voltage LAD20E + voltage
1	25	188.8	0	3.5	NBR FKM EPDM	100 120 120	LAD25N + voltage LAD25V + voltage LAD25E + voltage
1 1/4	35	371.8	0	3.5	NBR FKM EPDM	100 120 120	LAD35N + voltage LAD35V + voltage LAD35E + voltage
1 1/2	35	400	0	3.5	NBR FKM EPDM	100 120 120	LAD40N + voltage LAD40V + voltage LAD40E + voltage
2	51	686.4	0	2.5	NBR FKM EPDM	100 120 120	LAD50N + voltage LAD50V + voltage LAD50E + voltage

OPTIONS

IP68 UL & CSA approved coil & IP67 LED connector DIN 43650A
 NPT Thread
 Manual Override Base Mounted Screw T Bar for AD series
 *VST, Neoprene, ECO, Silicone, HNBR and Hypalon

Included

ELECTRICAL DATA

Voltage (-10% + 10%) Continuous duty 100%	Coil	Power Consumption	Insulation class	Enclosure	Electrical connections
= 12 – 24 (DC)	WPG2	18 Watts	H 180°C	IP 67 with connector	3 spades DIN 43650A DIN 40050 VDE 0110

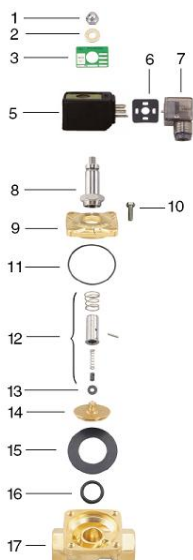
CONSTRUCTION

Body: Brass
 Tube and Spring: 304 Stainless Armature: 430F Stainless Other internal parts: Stainless No Shading Ring
 Seals and gaskets: NBR (Optional EPDM, FKM, Silicone, VST, Neoprene, ECO, HNBR and Hypalon)
 Moulded coil: Duroplast / Thermo set resin

REPAIR KIT

Diaphragm seal	SP215 + Valve Part Number
Coil	WPG2 + voltage

OVERALL DIMENSIONS



No.	Part No	Description
1	SP201*	Nut
2	SP202*	Washer
3	SP203*	Nameplate
5	SP205*	Coil
6	SP206*	Gasket
7	SP207*	Connector
8	SP208*	Core Tube
9	SP209*	Valve Bonnet
10	SP210*	Bolt
11	SP211*	Bonnet O Ring
12	SP212*	Armature Parts
13	SP213*	Diaphragm Base
14	SP214*	Diaphragm Base
15	SP215*	Diaphragm
16	SP216*	Base O Ring
17	SP217*	Valve Body

* = Valve Part Number

Model	AD14 AD15	AD20	AD25	AD35 AD40	AD50
Port G	1/2	3/4	1	1 1/2	2
A	75	85	100	120	150
B	52	60	70	90	120
C	103	114	120	140	160
Kg	1.03	1.24	1.51	2.77	4.81



Manual Over Ride option

