

Media: air – water – gas – light oil - vacuum 10<sup>-6</sup> torr  
 Pressure range: 0 to 3.5 Bar max  
 Media temperature: 120°C max  
 Ambient temperature: -10°C to +50°C max  
 Media viscosity: 50 centistokes max  
 Mounting: coil upright  
 Opening / Closing time: 20 mSec Max



# 2/2 Brass

## 1/8 – 1/2

### LATCHING

### 2 WAY DIRECT ACTING

### 0 – 3.5 Bar

## TYPE LAD612



#### PRESSURE

Ø Port BSP	Ø Orifice (mm)	Coil	Flow	Pressure Rating (Bar) ΔP		Seals	Part Number	
			Kv Ltr/min	Min	Max			
1/8	3.0	WPG1	3.7	0	3.5	NBR +100°C Max	LAD6A + seal + voltage	
	4.0		8.3	0	2.5		LAD6B + seal + voltage	
	5.0		9.2	0	1.8		LAD6C + seal + voltage	
1/4	3.0		3.7	0	3.5		Silicone EPDM FKM *PTFE *VST +120°C Max	LAD8A + seal + voltage
	4.0		8.3	0	2.5			LAD8B + seal + voltage
	5.0		9.2	0	1.8			LAD8C + seal + voltage
3/8	4.0	WPG2	3.7	0	3.5	LAD10A + seal + voltage		
	6.0		11.3	0	1.8	LAD10B + seal + voltage		
	8.0		13.9	0	0.7	LAD10C + seal + voltage		
1/2	6.0		11.3	0	1.8	LAD12A + seal + voltage		
	8.0		13.9	0	0.7	LAD12B + seal + voltage		

#### OPTIONS

IP68 CSA + UL approved coil & IP67 LED connector – DIN 43650 A  
 \* PTFE, VST, Neoprene, ECO, HNBR or Hypalon Seals (WPG1 coil)  
 \* PTFE, VST, Neoprene, ECO, HNBR or Hypalon Seals (WPG2/WPA3C coil)  
 Manual Override AD8 – AD10  
 NPT thread

**Included**

#### ELECTRICAL DATA

Voltage (-10% + 10%) Continuous duty 100%		Coil	Power Consumption	Insulation class	Enclosure	Electrical connections
=	12 - 24 (DC)	WPG1	12 Watts	H 180°C	IP 67 with connector	3 spades DIN 43650A DIN 40050 VDE 0110
=	12 - 24 (DC)	WPG2	18 Watts			

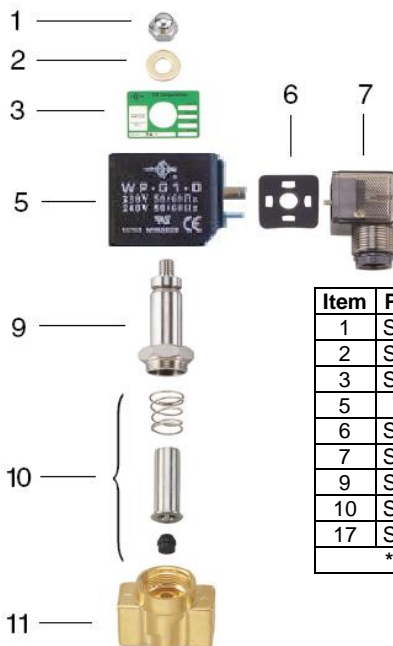
#### CONSTRUCTION

Body: Brass  
 Tube and Spring: 304 Stainless; Armature: 430F Stainless; Other internal parts: Stainless No Shading Ring  
 Seals and gaskets: FKM (Optional EPDM, NBR, Silicone, PTFE, VST, Neoprene, ECO, HNBR and Hypalon)  
 Moulded coil: Resin

#### REPAIR KIT

Coil	WPG1 or WPG2 + voltage
Armature + Seal	SP210 + valve part number

#### OVERALL DIMENSIONS



Item	Part No	Description
1	SP201-*	Nut
2	SP202-*	Washer
3	SP203-*	Nameplate
5	WPG*	Coil
6	SP206-*	Gasket
7	SP207-*	Connector
9	SP209-*	Core Tube
10	SP210-*	Armature Assembly
17	SP211-*	Valve Body

\* = Valve Part Number

Model	A	B	C	F*	G	H	Kg
LAD6/8	41	19	89	63	15	10.5	0.47
LAD10	50	25	90	65	15	11.7	0.73
LAD12	55	27	91	65	17	13	0.78

