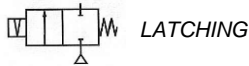


Media: air – water – gas – light oil - vacuum 10<sup>-6</sup> torr  
 Pressure range: 0 to 42 Bar max  
 Media temperature: 120°C max  
 Ambient temperature: -10°C to +50°C max  
 Media viscosity: 50 centistokes max  
 Mounting: coil upright  
 Opening / Closing time: 20 mSec Max



LATCHING

# 2/2 Brass

## 1/4"

### LATCHING

### 2 WAY DIRECT ACTING

### 0 – 42 Bar

## TYPE LAD8000



#### PRESSURE

| Ø Port BSP | Ø Orifice (mm) | Coil | Flow Kv Ltr/min | Pressure Rating (Bar) |     | Seals   | Part Number              |
|------------|----------------|------|-----------------|-----------------------|-----|---|--------------------------|
|            |                |      |                 | Min                   | Max |   |                          |
| 1/4        | 1.2            | WPG1 | 1.0             | 0                     | 21  | NBR<br>+80°C Max                                      | LAD8012 + seal + voltage |
|            | 1.6            |      | 1.3             | 0                     | 14  |   | LAD8016 + seal + voltage |
|            | 2.0            |      | 1.6             | 0                     | 7   |   | LAD8020 + seal + voltage |
|            | 1.2            | WPG2 | 1.0             | 0                     | 42  | Silicone<br>EPDM<br>FKM<br>PTFE<br>FFKM<br>+120°C Max | LAD8112 + seal + voltage |
|            | 1.6            |      | 1.3             | 0                     | 21  |   | LAD8116 + seal + voltage |
|            | 2.0            |      | 1.6             | 0                     | 10  |   | LAD8120 + seal + voltage |
|            | 3.0            |      | 3.7             | 0                     | 7   |   | LAD8130 + seal + voltage |
|            | 4.0            |      | 8.3             | 0                     | 4.2 |   | LAD8140 + seal + voltage |
|            | 5.0            |      | 9.2             | 0                     | 3.5 |   | LAD8150 + seal + voltage |

#### OPTIONS

IP67 UL + CSA approved coil & IP67 LED connector – DIN 43650 A  
 \* PTFE, FFKM, CR, ECO, HNBR or Hypalon Seals  
 Manual Override  
 NPT thread  
 Other custom-made options available upon request

Included

#### ELECTRICAL DATA

| Voltage (-10% + 10%)<br>Continuous duty 100% | Coil | Power Consumption | Insulation class | Enclosure                  | Electrical connections                          |
|--|------|-------------------|------------------|----------------------------|---|
| = 12 - 24 (DC)                               | WPG1 | 12 Watts          | H 180°C          | IP 67<br>with<br>connector | 3 spades<br>DIN 43650A<br>DIN 40050<br>VDE 0110 |
|  | WPG2 | 18 Watts          |                  |                            |   |

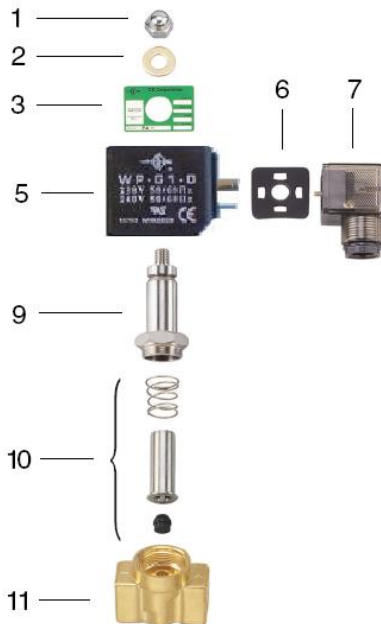
#### CONSTRUCTION

Body: Brass  
 Tube and Spring: 304 Stainless, Armature: 430F Stainless, Other internal parts: Stainless No Shading Ring  
 Seals and gaskets: FKM (Optional EPDM, NBR, Silicone, PTFE, FFKM, CR, ECO, HNBR and Hypalon)  
 Moulded coil: Resin

#### REPAIR KIT

|                 |                                  |
|-----------------|----------------------------------|
| Coil            | Coil size WPG1 or WPG2 + voltage |
| Armature + Seal | SP210 + valve part number        |

#### OVERALL DIMENSIONS



| Model     | A  | B  | C  | F* | G  | H    | Kg   |
|-----------|----|----|----|----|----|------|------|
| 8012-8020 | 41 | 19 | 85 | 63 | 15 | 10.5 | 0.47 |
| 8112-8150 | 41 | 19 | 88 | 65 | 15 | 10.5 | 0.66 |

| Item | Part No | Description       |
|------|---------|-------------------|
| 1    | SP201-* | Nut               |
| 2    | SP202-* | Washer            |
| 3    | SP203-* | Nameplate         |
| 5    | WPG-*   | Coil              |
| 6    | SP206-* | Gasket            |
| 7    | SP207-* | Connector         |
| 9    | SP209-* | Core Tube         |
| 10   | SP210-* | Armature Assembly |
| 17   | SP211-* | Valve Body        |

\* = Valve Part Number

