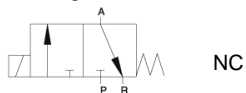


Media: air – water – gas – light oil - vacuum
 Pressure range: 0 to 7 Bar max
 Media temperature: +80°C max
 Ambient temperature: -10°C to +50°C max
 Media viscosity: 40 centistokes max
 Mounting: any position
 Weight (including coil): 270/370g
 Opening or Closing time: 20 mSec Max



3/2 Aluminium N/CLOSED (M5 Exhaust) 3 WAY DIRECT ACTING TYPE AM325



PRESSURE

Ø Port	Ø Orifice (mm)	Flow Rate Cv Ltr/ min	Pressure Rating (Bar)		Seals	Part Number
			Min	Max		
1/4 BSP	2.2	2.3	0	6	NBR +80°C Max	AM325-02S + voltage
3/8 BSP	2.3	2.5	0	6		AM325-03S + voltage

OPTIONS

IP65 Coil + Connector PG9 – DIN 43650 A
 ATEX EExmIIT4 II 2G & 2D IP65 T130°C
 NPT Thread

ELECTRICAL DATA

	Voltage (-10% + 15%) Continuous duty 100%	Coil Size	Power		Insulation class	Enclosure	Electrical connections
			Inrush	Holding			
~	12-24-48-110-220-240-380 (50/60 Hz)	22003	23VA	17VA	H 180°C	IP 65 with connector	3 spades DIN 43650 DIN 40050 VDE 0110
=	12-24-48-110-220 (DC)		15 Watts				

CONSTRUCTION

Body: Anodised Aluminium Alloy
 Tube and internal parts: Stainless steel
 Seals and gaskets: NBR
 Moulded coil: Resin

REPAIR KIT

Coil	11630 + voltage
Complete plunger + O' rings	KIT325 + port + seal material

OVERALL DIMENSIONS

