

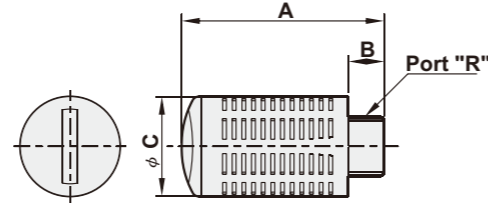
#### How to order

**EN** — **01**

Silencer-plastic type

Port size	
01	1/8"
02	1/4"
03	3/8"
04	1/2"
06	3/4"
08	1"

Model	R	A	B	C
EN-01	PT 1/8"	33	6	16
EN-02	PT 1/4"	42.2	8	20
EN-03	PT 3/8"	56.8	10	24
EN-04	PT 1/2"	56.8	10	24
EN-06	PT 3/4"	85	14	34
EN-08	PT 1"	100	19	41



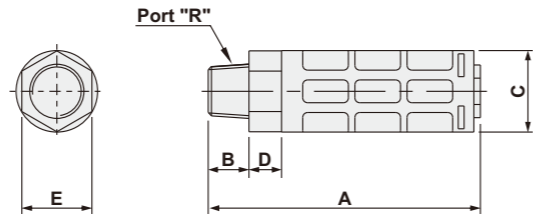
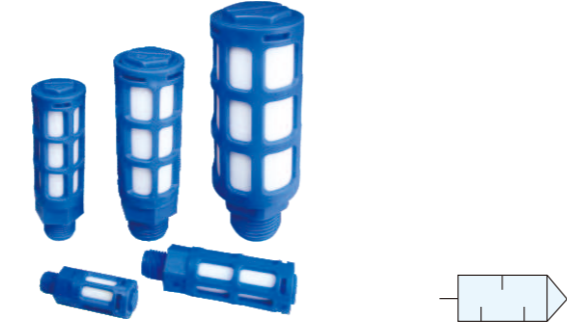
#### How to order

**ENB** — **01**

Silencer-plastic type

Port size	
01	1/8"
02	1/4"
03	3/8"
04	1/2"

Model	R	A	B	C	D	E
ENB-01	PT 1/8"	41	8	φ 16	7	14
ENB-02	PT 1/4"	65	10	φ 21	10	20
ENB-03	PT 3/8"	83.5	12.5	φ 25	10	22
ENB-04	PT 1/2"	94	14	φ 30	10	26



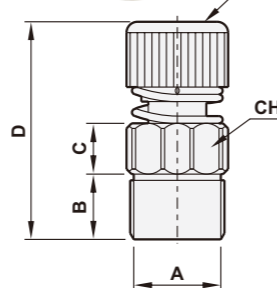
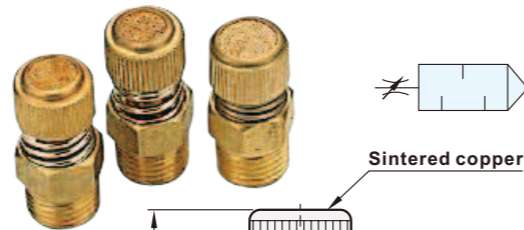
#### How to order

**EV** — **01** — **N**

Silencer-vibration type

Port size		Thread	
01	1/8"	Blank	PT
02	1/4"	N	NPT
03	3/8"		
04	1/2"		

Model	A	B	C	D	CH
EV-01	PT 1/8"	6.0	7.0	33.0	12.0
EV-02	PT 1/4"	9.0	7.0	35.0	16.0
EV-03	PT 3/8"	10.0	10.0	40.0	18.0
EV-04	PT 1/2"	10.0	10.0	42.0	24.0



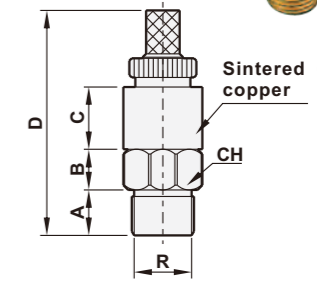
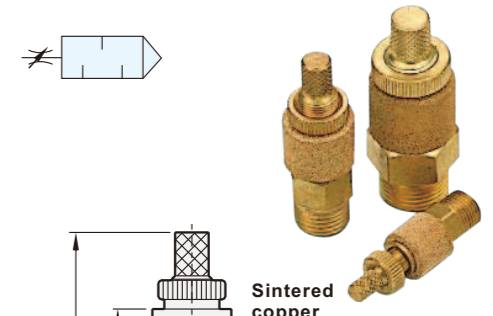
#### How to order

**ES** — **01** — **N**

Silencer-exhaust speed control type

Port size		Thread	
01	1/8"	Blank	PT
02	1/4"	N	NPT
03	3/8"		
04	1/2"		

Model	R	B	C	D	E	CH
ES-01	PT 1/8"	6.0	7.0	23.0	36.0	12.0
ES-02	PT 1/4"	9.0	7.0	28.0	43.0	14.0
ES-03	PT 3/8"	10.0	10.0	35.0	46.5	18.0
ES-04	PT 1/2"	11.0	5.0	20.0	56.5	22.0



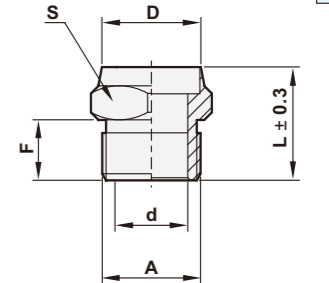
#### How to order

**EP** — **01** — **N**

Silencer-breather vents type

Port size		Thread	
M5	M5	04	1/2"
01	1/8"	06	3/4"
02	1/4"	08	1"
03	3/8"		

Model	A	D	d	L	F	S
EP-05	M5	7.5	2.5	10.0	5.0	8.0
EP-01	PT 1/8"	11.4	6.5	11.3	6.4	12.0
EP-02	PT 1/4"	14.8	9.0	14.1	8.2	15.0
EP-03	PT 3/8"	18.0	12.0	15.8	9.0	19.0
EP-04	PT 1/2"	21.0	15.0	18.8	10.5	22.0
EP-06	PT 3/4"	26.0	20.0	20.8	12.0	27.0
EP-08	PT 1"	34.2	26.0	24.8	14.5	36.0



#### How to order

**EC** — **01** — **N**

Silencer-muffler type

Port size		Thread	
M5	M5	04	1/2"
01	1/8"	06	3/4"
02	1/4"	08	1"
03	3/8"		

Model	A	B	C	D	F	L	S
EC-05	M5	3.0	12.0	4.0	5.0	20.0	8.0
EC-01	PT 1/8"	4.0	14.0	7.0	6.0	24.0	12.0
EC-02	PT 1/4"	4.0	18.0	10.0	8.0	30.0	16.0
EC-03	PT 3/8"	5.0	21.0	11.0	9.0	35.0	18.0
EC-04	PT 1/2"	6.0	28.0	15.0	10.0	44.0	24.0
EC-06	PT 3/4"	8.0	32.0	20.0	10.0	50.0	30.0
EC-08	PT 1"	8.0	43.0	25.0	12.0	63.0	36.0

