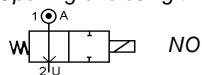


Media: air - water - light oil - vacuum  
 Pressure range: 0 to 300 Bar max  
 Media temperature: 100°C max  
 Ambient temperature: -10° to +50°C max  
 Media viscosity: 40 centistokes max  
 Mounting: Vertical position coil up  
 Weight (including coil): 500g  
 Opening or closing time: 20 mSec max



# 2/2 Stainless

## 1/8 – 1/4

### NORMALLY OPEN

### 2 WAYS DIRECT ACTING

### 0 – 300 Bar

## TYPE WFH + EN52090



#### PRESSURE

Ø Port BSP	Ø Orifice (mm)	Flow Kv Ltr/Min	Coil	Pressure Rating (Bar)		Seals	Part Number
				Min	Max		
1/8 Or 1/4	0.5	0.15	31037	0	300	PTFE NBR EPDM FKM	EN52090-80 + port + voltage EN52090-10 + port + voltage EN52090-30 + port + voltage EN52090-20 + port + voltage
	0.6	0.20	31400	0	200	NBR FKM	WF0.6H10 + port + voltage WF0.6H20 + port + voltage
	0.8	0.30		0	130	NBR FKM	WF0.8H10 + port + voltage WF0.8H20 + port + voltage
	0.9	0.40		0	100	NBR FKM	WF0.9H10 + port + voltage WF0.9H20 + port + voltage
	1	0.50		0	70	NBR FKM EPDM	WF1H10 + port + voltage WF1H20 + port + voltage WF1H30 + port + voltage
	1.2	0.67		0	50	NBR FKM EPDM	WF1.2H10 + port + voltage WF1.2H20 + port + voltage WF1.2H30 + port + voltage
	1.5	0.95		0	35	NBR FKM EPDM	WF1.5H10 + port + voltage WF1.5H20 + port + voltage WF1.5H30 + port + voltage
	2	1.60		0	20	NBR FKM EPDM	WF2H10 + port + voltage WF2H20 + port + voltage WF2H30 + port + voltage
	2.2	1.80		0	15	NBR FKM EPDM	WF2.2H10 + port + voltage WF2.2H20 + port + voltage WF2.2H30 + port + voltage
	2.5	2.30		0	12	NBR FKM EPDM	WF2.5H10 + port + voltage WF2.5H20 + port + voltage WF2.5H30 + port + voltage

#### OPTIONS

IP65 Coil & Connector DIN 43650 A PG9  
 NPT 1/8 + 1/4 thread  
 Seals and gaskets in PTFE  
 Explosion Proof Enclosure ATEX II 2 G/D EexdIICT6, IP65

Included

#### ELECTRICAL DATA

	Voltage (-10% + 15%) Continuous duty 100%	Coil	Power Consumption		Insulation class	Enclosure	Electrical connections
			Inrush	Holding			
~	24-48-110-230 (50 / 60 Hz)	31400	37VA	20VA	F 155°C	IP 65 with connector	3 spades DIN 43650A DIN 40050 VDE 0110
=	12-24-48		14 – 20 Watts				
~	24-48-110-230 (50 / 60 Hz)	31037	48VA	24VA			
=	12-24-48		14 Watts				

#### CONSTRUCTION

Body, tube and internal parts: Stainless Steel  
 Seals and gaskets: NBR-FKM-EPDM  
 Moulded coil: resin

#### REPAIR KIT

Coil	31400 or 31037 + voltage
Complete plunger	KIT + valve part number

#### OVERALL DIMENSIONS

