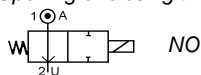


Media: air - water - light oil - vacuum
 Pressure range: 0 to 200 Bar max
 Media temperature: 100°C max
 Ambient temperature: -10° to +50°C max
 Media viscosity: 40 centistokes max
 Mounting: Vertical position coil up
 Weight (including coil): 500g
 Opening or closing time: 20 mSec max



2/2 Stainless

1/8 – 1/4
 NORMALLY OPEN
 2 WAYS DIRECT ACTING
 0 – 200 Bar
 TYPE WFH



PRESSURE

Ø Port BSP	Ø Orifice (mm)	Flow Kv Ltr/Min	Pressure Rating (Bar)		Seals	Part Number
			Min	Max		
1/8 Or 1/4	0.6	0.20	0	200	NBR FKM	WF0.6H10 + port + voltage WF0.6H20 + port + voltage
	0.8	0.30	0	130	NBR FKM	WF0.8H10 + port + voltage WF0.8H20 + port + voltage
	0.9	0.40	0	100	NBR FKM	WF0.9H10 + port + voltage WF0.9H20 + port + voltage
	1	0.50	0	70	NBR FKM EPDM	WF1H10 + port + voltage WF1H20 + port + voltage WF1H30 + port + voltage
	1.2	0.67	0	50	NBR FKM EPDM	WF1.2H10 + port + voltage WF1.2H20 + port + voltage WF1.2H30 + port + voltage
	1.5	0.95	0	35	NBR FKM EPDM	WF1.5H10 + port + voltage WF1.5H20 + port + voltage WF1.5H30 + port + voltage
	2	1.60	0	20	NBR FKM EPDM	WF2H10 + port + voltage WF2H20 + port + voltage WF2H30 + port + voltage
	2.2	1.80	0	15	NBR FKM EPDM	WF2.2H10 + port + voltage WF2.2H20 + port + voltage WF2.2H30 + port + voltage
2.5	2.30	0	12	NBR FKM EPDM	WF2.5H10 + port + voltage WF2.5H20 + port + voltage WF2.5H30 + port + voltage	

OPTIONS

IP65 Coil & Connector DIN 43650 A PG9 NPT 1/8 + 1/4 thread Seals and gaskets in PTFE Explosion Proof Enclosure ATEX II 2 G/D EexdIICT6, IP65	Included
---	-----------------

ELECTRICAL DATA

	Voltage (-10% + 15%) Continuous duty 100%	Coil	Power Consumption		Insulation class	Enclosure	Electrical connections
			Inrush	Holding			
~	24-48-110-230 (50 / 60 Hz)	31400	37VA	20VA	F 155°C	IP 65 with connector	3 spades DIN 43650A DIN 40050 VDE 0110
=	12-24-48		14 – 20 Watts				

CONSTRUCTION

Body, tube and internal parts: Stainless Steel
 Seals and gaskets: NBR-FKM-EPDM
 Moulded coil: resin

REPAIR KIT

Coil	31400 or 31037 + voltage
Complete plunger	KIT + valve part number

OVERALL DIMENSIONS

