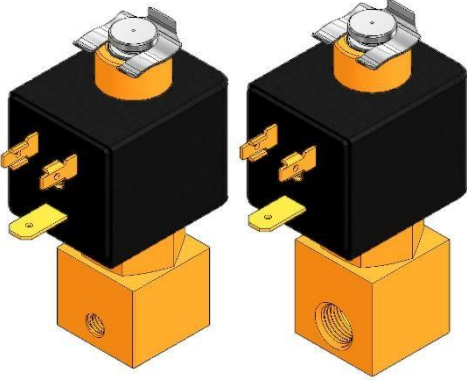
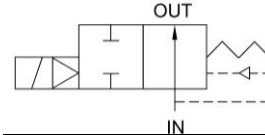


Small Piston Series 2/2 Way N.O.

Opening: 8~25ms

Closing: 15~50ms



Power Consumption	COIL#	#3.5
	AC (VA)	9.0
	Final Temp. °C	86.0
	DC (W)	4.5
	Final Temp. °C	70.0
Ambient Temp. : -15°C~50°C (No Freezing)		

SEAL Temp. °C	#3.5	
SEAL	N:NBR	-5~60
	J:EPDM	-10~145
	V:FKM	

SPECIFICATIONS

Brass Body, For Water, Air, Gas, Light oil, Vacuum etc.

CODE (PIPE)	Fig. No.	Orifice mm	SEAL	COIL	Working Press. 0~ bar	Cv	Torr
01 (M5)	1	1.6	N	#3.5	7.0	0.09	10 ⁻¹
	2	2.0	J		5.5	0.14	
03 (1/8")	3	2.5	V		4.0	0.18	

TYPE INDICATION

TYPE	CODE	FIG. NO.	SEAL	COIL #	PLUG	CONN.	VOLTAGE
RS	01 (M5) 03 (1/8")	1 2 3	N:NBR J:EPDM V:FKM	0:#3.5	0:DIN A:None D:LED G:1/2"NPT	P:PT (Rc) N:NPT G:G (BSPF)	AC--- DC---

Examples

Example 1: RS03-3-N-0-0-P DC24V

TYPE RS, 1/8" PT, Orifice 2.5mm, NBR Seal, Amisco #3.5 Coil, Standard Plug, DC24V

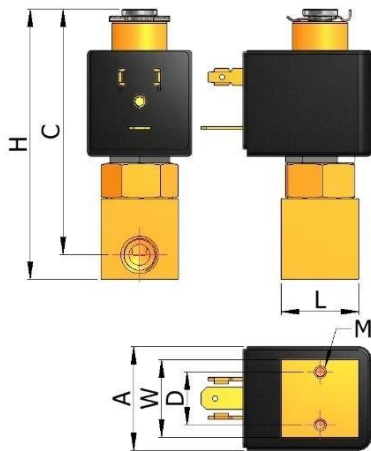
Example 2: RS01-1-V-0-D-AC220V

TYPE RS, M5 Pipe, Orifice 1.6 mm, FKM Seal, Amisco #3.5 Coil, LED Plug, AC220V

DIMENSIONS/WEIGHT

TYPE	Dimenions:mm							Net Weight g
	L	W	A	H	C	D	M	
01 (M5)	22	22	30	73	68	15	M3	238
03 (1/8")				77	70			245

DIMENSIONED DRAWING



OPTION M Bracket

