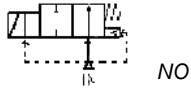


Media: air – water – light oil – vacuum 10⁻³
 Pressure range: 0 to 10 Bar max
 Media temperature: +120°C max
 Ambient temperature: -5° to +50°C max
 Media viscosity: 20 centistokes max
 Mounting: coil upright
 Opening / Closing 150 mSec Max



2/2 Stainless

1/2 – 2”

NORMALLY OPEN

2 WAY ASSISTED CLOSE

0 – 10 Bar

TYPE SUW-NO



PRESSURE

Ø Port BSP	Ø Orifice (mm)	Flow Kv Ltr/ min	Pressure Rating (Bar) ΔP			Max Working	Seals	Part Number
			Min	Max Water / Oil	Max Air / Gas			
1/2	15	64.4	0	5	7	10	NBR +80°C Max FKM Silicone EPDM +130°C Max	SUW15NON + voltage SUW15NOV + voltage SUW15NOS + voltage
3/4	20	123	0	5	7	10		SUW20NON + voltage SUW20NOV + voltage SUW20NOS + voltage
1	25	171.6	0	5	7	10		SUW25NON + voltage SUW25NOV + voltage SUW25NOS + voltage
1 1/4	35	343.2	0	5	7	10		SUW35NON + voltage SUW35NOV + voltage SUW35NOS + voltage
1 1/2	40	400.4	0	5	7	10		SUW40NON + voltage SUW40NOV + voltage SUW40NOS + voltage
2	50	686.4	0	5	7	10		SUW50NON + voltage SUW50NOV + voltage SUW50NOS + voltage

OPTIONS

IP65 Coil & Connector PG9 – DIN 43650 A NPT, BSPT	Included
--	-----------------

ELECTRICAL DATA

Voltage (AC -10% + 10%) (DC -1% + 1%) Continuous duty 90%	Coil	Power Consumption (Amp)			Insulation class	Enclosure	Electrical connections
		24vDC	110vAC	230vAC			
~ 110 – 230 (50 or 60 Hz)	M		0.19	0.1	H 180°C	IP 65 with connector	3 spades DIN 43650 DIN 40050 VDE 0110
= 24 (DC)		0.75					

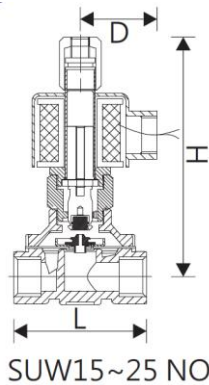
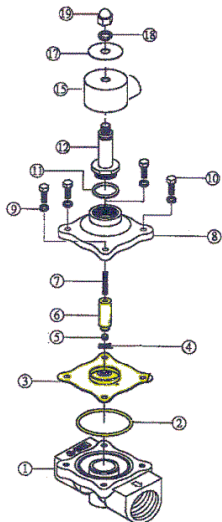
CONSTRUCTION

Body: 316 stainless steel (CF8M)
 Tube and internal parts: Stainless steel
 Seals and gaskets: FKM (Optional NBR or Silicone)
 Moulded coil: Resin

REPAIR KIT

Diaphragm seal	SUW + orifice + seal material
Coil	M + voltage
Armature assembly	SP + Valve Part Number -ARMATURE

OVERALL DIMENSIONS



Port G	1/2	3/4	1	1 1/4	1 1/2	2
L	70	76	100	123	123	167
H	126	132	139	140	140	150
D	48	48	48	48	48	48
Width	56.5	78	78	94	94	120
Kg	1.1	1.2	1.8	3.2	3.5	5.4

