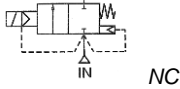


Media: air – water – slight acid/alkali – vacuum Torr10⁻¹
 Pressure range: 0 to 7 Bar max
 Media temperature: +4 to +60°C max
 Ambient temperature: +4°C to +50°C max
 Media viscosity: 50 centistokes max
 Mounting: coil upright
 Open: 200-400mSec, Close 1000-3000mSec



2/2 Nylon

3/8 - 1

NORMALLY CLOSED

2 WAY ASSISTED LIFT

0 – 7 Bar

TYPE PK



PRESSURE

Ø Port BSP	Ø Orifice (mm)	Flow Kv Ltr/ min	Min	Max Pressure Rating (Bar) ΔP		Seals	Part Number
				DC 18.5 Watt Coil 22005	AC 15 Watt Coil 22003		
3/8	18	57.2	0		7	NBR FKM EPDM	PK14NS + voltage PK14VS + voltage PK14ES + voltage
				2		NBR FKM EPDM	PK14N-5 + voltage PK14V-5 + voltage PK14E-5 + voltage
1/2	18	57.2	0		7	NBR FKM EPDM	PK15NS + voltage PK15VS + voltage PK15ES + voltage
				2		NBR FKM EPDM	PK15N-5 + voltage PK15V-5 + voltage PK15E-5 + voltage
3/4	28	140.14	0		7	NBR FKM EPDM	PK20NS + voltage PK20VS + voltage PK20ES + voltage
				2		NBR FKM EPDM	PK20N-5 + voltage PK20V-5 + voltage PK20E-5 + voltage
1	28	157.3	0		7	NBR FKM EPDM	PK25NS + voltage PK25VS + voltage PK25ES + voltage
				2		NBR FKM EPDM	PK25N-5 + voltage PK25V-5 + voltage PK25E-5 + voltage

OPTIONS

IP65 Coil & Connector PG9 – DIN 43650 A
 Silver Shading Ring for AC voltages (Not suitable for ATEX EExmIIT4 coil)
 ATEX 22003EX Coil: ATEX EExmIIT4 II 2G & 2D IP65 T130°C (AC 2 Bar DC 1 Bar) ⚠️ (without Shading Ring)
 NPT Thread
 L Type Fixing plate for PK14 + PK15

Included
Included

ELECTRICAL DATA

Voltage (-10% + 10%) Continuous duty 100%	Coil	Power Consumption		Insulation class	Enclosure	Electrical connections
		Inrush	Holding			
~ 12 - 24 - 48 - 110 - 230 - 380 (50/60 Hz)	22003	23VA	17VA	H 180°C	IP 65 with connector	3 spades DIN 43650 DIN 40050 VDE 0110
= 12 - 24 - 48 - 110 (DC)		15 Watts				
~ 24 - 48 - 110 - 230 (50/60 Hz)	22005	33VA	24VA			
= 12 - 24 - 48 - 110 - 220 (DC)		18.5 Watts				

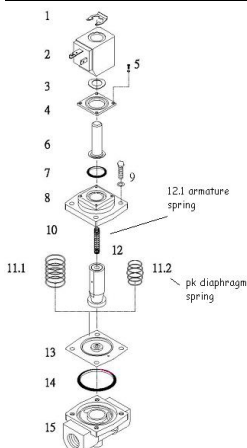
CONSTRUCTION

Body: Nylon; Tube and internal parts: Stainless steel
 Seals and gaskets: NBR (Optional EPDM or FKM)
 Moulded coil: Resin
 Shading Ring: Silver AC voltages, without shading ring DC voltages

REPAIR KIT

Diaphragm seal	Valve part number + seal material
Coil	22003 or 22005 + voltage
Complete Armature assembly	SP + Valve Part Number -ARMATURE

OVERALL DIMENSIONS



No	Description
1	Coil Clip
2	Coil
3	Wave Washer
4	Flange
5	Screw
6	Core Tube
7	Cover O Ring
8	Bonnet
9	Bonnet Screw
10	Armature Spring
11.1	Diaphragm Spring for PD
11.2	Diaphragm Spring for PK
12	Armature
13	Diaphragm
14	Body O Ring
15	Valve Body

Model	PK14/15	PK20	PK25
Port	3/8 1/2	3/4	1
L	75	92	
W	56	76	
H	109	121	
C	93	98	
D	36		
E	40		
Ø	3.5		
Kg	0.5	0.71	0.63

