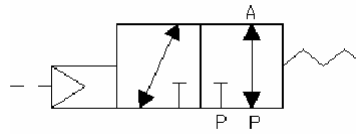


3/2 Way Universal. Solenoid Valve

Type UT



POWER CONSUMPTION

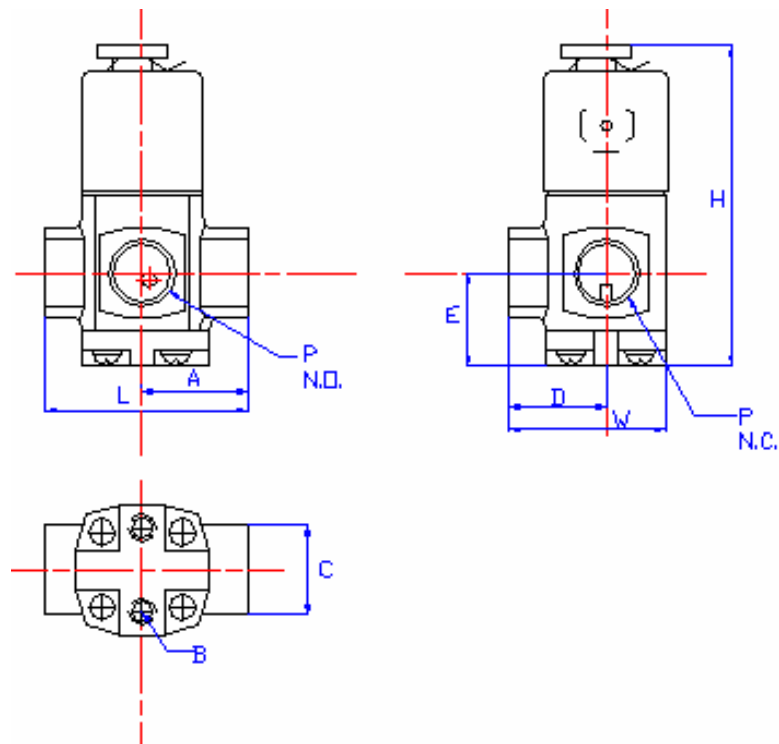
COIL	3	2E	4	3E
AC(VA)	8.0	4.8	15.4	9.2
DC(W)	6.8	5.2	15.0	10.0

SPECIFICATIONS: Forged Brass Body, For Water, Air, Gas, Light Oil, Vacuum etc.

CODE (PIPE)	FIG. NO.	SEAL MAT'L	COIL	ORIFICE mm	TEMP. °C		Max. O.P.D. bar (Min. 0 bar)		Cv	Vac. torr	
					N	V	COIL 3/2E	COIL 4/3E			
03(1/8) 06(1/4)	1	N	3	0.8	-5 / 80	-10 / 145	-	10	-	0.02	10 ⁻²
	2			1.0				7		0.03	
	3			1.2				5		0.05	
	4	V	2E	1.5				3		0.09	10 ⁻¹
	5	1.8	1	0.12							
08(1/4) 10(3/8)	1	N	4	1.3	-5 / 80	-10 / 145	-	10	-	0.07	10 ⁻³
	2			1.6				7		0.10	
	3			2.0				5		0.15	
	4	V	3E	2.4				4		0.20	10 ⁻²
	5	3.0	3	0.31				10 ⁻¹			

TYPE INDICATION

TYPE	CODE	FIG. NO.	SEAL MAT'L	COIL	PLUG	VOLTAGE
UT	03 : 1/8 06 : 1/4 08 : 1/4 10 : 3/8	1 2 3 4 5 6	N : NBR V : FKM	3 4 E : EEXmIIT4 Explosion- Proof	O : Without A : DIN D : LED G : 1/2" NPTF	



DIMENSION mm

Type	L	W	H	A	B	C	D	E	N.W. kg
UT03/06	45.5	30.5	69.0	25.5	M3	14.0	19.0	15.5	0.34
UT08/10	51.0	39.0	87.0	28.5	M4	24.0	22.5	23.0	0.59

ISO 9001

Solenoid-Valve.World



Unit3, Rainbow Court, Armstrong Way, Yate, Bristol, BS37 5NG, England

Tel: +44 (0) 1454 334990 ; Fax: +44 (0) 01454 326390

E-mail: sales@solenoid-valves.com;

<http://www.solenoid-valve.world>