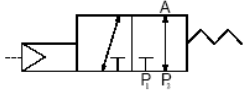


Media: air – water – gas – light oil - vacuum
 Pressure range: 0 to 10 Bar max
 Media temperature: 145°C max
 Ambient temperature: -10° to +50°C max
 Media viscosity: 50 centistokes max
 Mounting: any position
 Opening or Closing Time: 20 mSec Max



UNIVERSAL

3/2 Brass

1/8 – 3/8

UNIVERSAL

3 WAY DIRECT ACTING

0 to 10 Bar


TYPE UT



PRESSURE

| Ø Port BSP | Ø Orifice (mm) | Kv Ltr/min | Pressure Rating (Bar) | | | Seals | Part Number (Replace xx with port size) |
|------------|----------------|------------|-----------------------|-----------------------|---------------------------------|----------------------|--|
| | | | Min | 8 Watt Coil 3 22001/6 | 5.2 Watt ATEX Coil 2E (22002EX) | | |
| 1/8 (03) | 0.8 | 0.33 | 0 | 10 | 10 | NBR -5 to +80°C | UTxx13 + seal + voltage |
| | 1.0 | 0.5 | 0 | 7 | 7 | | UTxx23 + seal + voltage |
| | 1.2 | 0.83 | 0 | 5 | 5 | | UTxx33 + seal + voltage |
| 1/4 (06) | 1.5 | 1.5 | 0 | 3 | 3 | FKM -10 to +145°C | UTxx43 + seal + voltage |
| | 1.8 | 2 | 0 | 1 | 1 | | UTxx53 + seal + voltage |
| Port | Orifice | Flow | Min | 15 Watt Coil 4 | 10.1 Watt ATEX Coil 3E 22003EX | Seals | Part Number |
| 1/4 (08) | 1.3 | 1.2 | 0 | 10 | 10 | NBR -5 to +80°C | UTxx14 + seal + voltage |
| | 1.6 | 1.7 | 0 | 7 | 7 | | UTxx24 + seal + voltage |
| | 2.0 | 2.5 | 0 | 5 | 5 | | UTxx34 + seal + voltage |
| 3/8 (10) | 2.5 | 3.3 | 0 | 4 | 4 | FKM -10 to +145°C | UTxx44 + seal + voltage |
| | 3.0 | 5 | 0 | 3 | 3 | | UTxx54 + seal + voltage |

OPTIONS

IP65 Coil & Connector PG9 – DIN 43650 A
 ATEX Coil 2E or 3E: ATEX EExmIIT4 II 2G & 2D IP65 T130°C 
 NPT Thread
 FKM (V) seal

ELECTRICAL DATA

| Voltage (-10% + 15%) Continuous duty 100% | Coil | Power Consumption | Insulation class | Enclosure | Electrical connections |
|--|--------------------|-------------------|------------------|----------------------------|---|
| ~ 24 - 48 - 110 - 230 (50/ 60Hz) | Coil 3 22001/6 | 8VA | F 155°C | IP 65 with connector | 3 spades DIN 43650A DIN 40050 VDE 0110 |
| = 12 - 24 - 48 (DC) | | 6.8 Watts | | | |
| ~ 24 - 48 - 110 - 230 - 380 (50/ 60Hz) | Coil 4 22003 | 15.4VA | H 180°C | | |
| = 12 - 24 - 48 - 240 (DC) | | 15 Watts | | | |
| ~ 24 - 110 - 230 (50/ 60Hz) | Coil 2E 22002EX | 5.2 Watts | F 155°C | IP65 With 3 mtr cable | |
| = 12 - 24 (DC) | | 10.1 Watts | | | |
| ~ 24 - 110 - 230 (50/ 60Hz) | Coil 3E 22003EX | 10.1 Watts | | | |
| = 12 - 24 (DC) | | | | | |

CONSTRUCTION

Body: Brass, Tube and internal parts: Stainless steel, Seals and gaskets: NBR or FKM
 Moulded coil: Resin

REPAIR KIT

| | |
|----------------------------|---------------------------------------|
| Coil | Coil size (830P6 or 1330P4) + voltage |
| Complete Armature assembly | KIT + valve part number |

OVERALL DIMENSIONS

| Model | L | W | H | A | B | C | D | E | Kg |
|---------|------|------|----|------|----|----|------|------|------|
| UT03/06 | 45.5 | 30.5 | 69 | 25.5 | M3 | 14 | 19 | 15.5 | 0.34 |
| UT08/10 | 51 | 39 | 78 | 28.5 | M4 | 24 | 22.5 | 23 | 0.59 |

