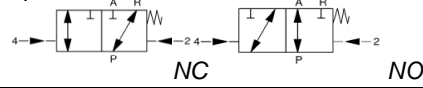


Media: air – water – oil - vacuum
 Pressure range: 0 to 100 Bar max
 Media temperature: -10°C to +100°C
 Ambient temperature: -10°C to +50°C
 Media viscosity: 500 centistokes max
 Mounting: any position
 Air pilot: 3 - 8 bar
 Open/Close time: 50 – 1000 mSec



3/2 Brass & Stainless


1/4 – 2" COAXIAL N/CLOSED & N/OPEN 3 WAY PNEUMATIC 0 - 100 Bar TYPE 381



PRESSURE

Port BSP	Ø Orifice (mm)	Flow Kv M ³ /Hr	min	Pressure Rating (Bar)		Body Material	Part Number
				Max.			
				P→A P→R	A→P R→P		
1/4, 3/8, 1/2, (3/4*)	10	2.5	0	100	16	Brass	381A10MOG + port
3/8, 1/2, 3/4, (1*)	15	6.6	0	100	16	Brass	381A15MOG + port
1/2, 3/4, 1, (1 1/4*)	20	10.0	0	100	16	Brass	381A20MOG + port
3/4, 1, 1 1/4 (1 1/2*)	25	12.2	0	100	16	Brass	381A25MOG + port
1, 1 1/4, 1 1/2	32	17.9	0	100	16	Brass	381A32MOG + port
1 1/2	40	41.5	0	100	16	Brass	381A40MOG-112
2	50	43.0	0	100	16	Brass	381A50MOG-2
1/4, 3/8, 1/2, (3/4*)	10	2.5	0	100	16	AISI303	381A10V2G + port
3/8, 1/2, 3/4, (1*)	15	6.6	0	100	16	AISI303	381A15V2G + port
1/2, 3/4, 1, (1 1/4*)	20	10.0	0	100	16	AISI303	381A20V2G + port
3/4, 1, 1 1/4, (1 1/2*)	25	12.2	0	100	16	AISI303	381A25V2G + port
1, 1 1/4, 1 1/2	32	17.9	0	100	16	AISI303	381A32V2G + port
1 1/2	40	41.5	0	100	16	AISI303	381A40V2G-112
2	50	43.0	0	100	16	AISI303	381A50V2G-2
1/4, 3/8, 1/2, (3/4*)	10	2.5	0	100	16	AISI316	381A10V4G + port
3/8, 1/2, 3/4, (1*)	15	6.6	0	100	16	AISI316	381A15V4G + port
1/2, 3/4, 1, (1 1/4*)	20	10.0	0	100	16	AISI316	381A20V4G + port
3/4, 1, 1 1/4 (1 1/2*)	25	12.2	0	100	16	AISI316	381A25V4G + port
1, 1 1/4, 1 1/2	32	17.9	0	100	16	AISI316	381A32V4G + port
1 1/2	40	41.5	0	100	16	AISI316	381A40V4G-112
2	50	43.0	0	100	16	AISI316	381A50V4G-2

OPTIONS

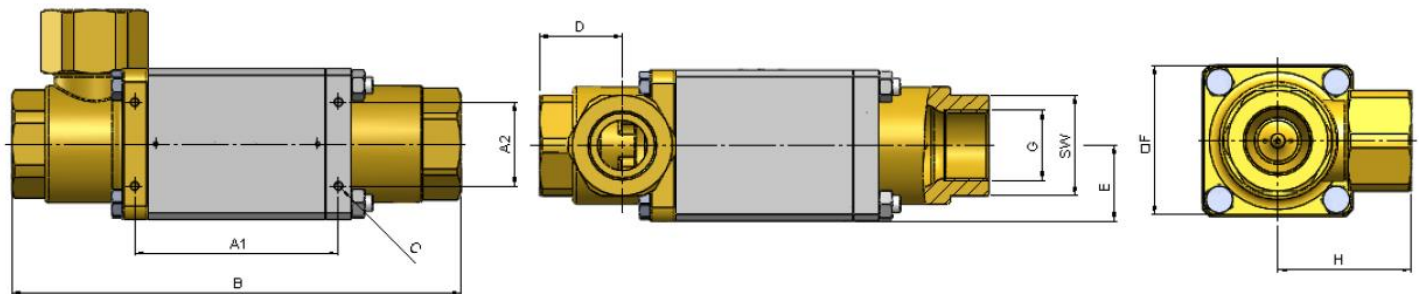
Normally Open (380B):
 Mounting brackets (x2):
 Namur Valve CY52002S single acting spring close
 Namur Valve CY52002D double acting
 ATEX EExmII T4 Temperature Class T4 T130°C Ex mb IIC T4 and Gb Ex mb tb IIIC T130°C Db for hazardous area 21 and 22 
 Magnetic field sensor E1 (Open or Closed) position feedback switches
 Magnetic field sensor E2 (Open & Closed) position feedback switches
 Available upon request – Vacuum – Brass Nickel Plated – Free of oil and Grease – Flanged – NBR EPDM or PTFE seals

⇐ See
 ⇐ See

CONSTRUCTION

Body: Brass MS058 (MO): Optional AISI303 (V2) 1.4305 or AISI316 (V4) 1.4571
 Tube and internal parts: Stainless steel
 Seals: Static FKM, Dynamic PTFE + FKM, Seat PTFE

OVERALL DIMENSIONS



DN	G	SW	A1 (mm)	A2 (mm)	B (mm)	C (mm)	D (mm)	E (mm)	F (mm)	H (mm)	Kg
10	1/4 3/8 1/2 3/4*	32	84	-	166.5	M4	32	25	50	37	1.8
15	3/8 1/2 3/4 1*	41	100	-	200	M5	38.5	35	70	60	3.2
20	1/2 3/4 1 1 1/4*	46	108	-	228	M5	45.5	40	80	72	4.6
25	3/4 1 1 1/4 1 1/2*	55	121	-	252	M5	48	45	90	80	6.5
32	1 1 1/4 1 1/2	60	122	50	269	M6	49.5	45	90	80	7.6
40	1 1/2	75	131	60	304	M6	56.5	55	110	84	12.1
50	2	75	131	80	304	M6	56.5	55	110	84	12.1