

Media: air – water – gas – vacuum  
 Pressure range: 0 to 16 Bar max  
 Media temperature: -20°C +185°C max\*  
 Ambient temperature: -10° to +50°C  
 Media viscosity: 50 centistokes max  
 Mounting: any position  
 Open: 20-60mSec / Close: 40-120mSec

# 2/2 Brass

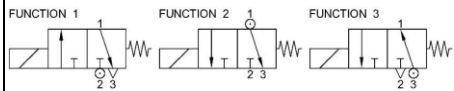
## 1/4 - 3/4

### NORMALLY CLOSED

### 3 WAY DIRECT ACTING

## 0 – 16 Bar

## TYPE CT



PRESSURE												
Ø Port	Orifice (mm)		Flow Kv L/Min	Pressure Rating (Bar)				Coil	Seals	Part Number		
	Body	Tube		Min	Max							Torr
					Function 1	Function 2	Function 3					
1/4 (06)	1	1.6	0.33	0	12	10	3	22003 15W	NBR -5°C to +80°C	CT + port + A4 + seal + voltage		
	1.3		0.83	0	9					CT + port + 04 + seal + voltage		
	1.6		1.7	0	7					CT + port + 14 + seal + voltage		
	2	2	2.5	0	5.5	8	2			CT + port + 24 + seal + voltage		
	2.5	2.5	3.3	0	4	6.5	1			CT + port + 34 + seal + voltage		
	3	3	5.2	0	2.5	4.5				10 <sup>-1</sup>	CT + port + 44 + seal + voltage	
4	8.5		0	1.5	CT + port + 54 + seal + voltage							
5	10.8		0	1	CT + port + 64 + seal + voltage							
3/8 (10)	1	1.6	0.33	0	16	12	-	22005 18.5W	EPDM (J)* -10°C to +145°C	CT + port + A5 + seal + voltage		
	1.3		0.83	0	12					CT + port + 05 + seal + voltage		
	1.6		1.7	0	8.5					CT + port + 15 + seal + voltage		
2	2	2.5	0	7	10	10 <sup>-2</sup>	CT + port + 25 + seal + voltage					
2.5	2.5	3.3	0	5.5	8		CT + port + 35 + seal + voltage					
3	3	5.2	0	4	5.5		CT + port + 45 + seal + voltage					
4		8.5	0	2.5		CT + port + 55 + seal + voltage						
5		10.8	0	1.5		CT + port + 65 + seal + voltage						
1/2* (15)	1	1.6	0.33	0	11	10	3	3E ATEX 10.1W	FKM (V)* -10°C to +145°C	CT + port + A3E + seal + voltage		
	1.3		0.83	0	8					CT + port + 03E + seal + voltage		
	1.6		1.7	0	6					CT + port + 13E + seal + voltage		
2	2	2.5	0	5	8	2	CT + port + 23E + seal + voltage					
2.5	2.5	3.3	0	3	6.5	1	CT + port + 33E + seal + voltage					
3	3	5.2	0	2	4.5		10 <sup>-1</sup>			CT + port + 43E + seal + voltage		
4		8.5	0	1.5				CT + port + 53E + seal + voltage				
5		10.8	0	0.8		CT + port + 63E + seal + voltage						

OPTIONS										
Connector PG9 – DIN 43650 A, IP65 Coil 1/2 BSP port (10) 3/4 BSP port (20) FKM (V) or EPDM (J) seals FFKM Seals (Z)										<b>Included</b>

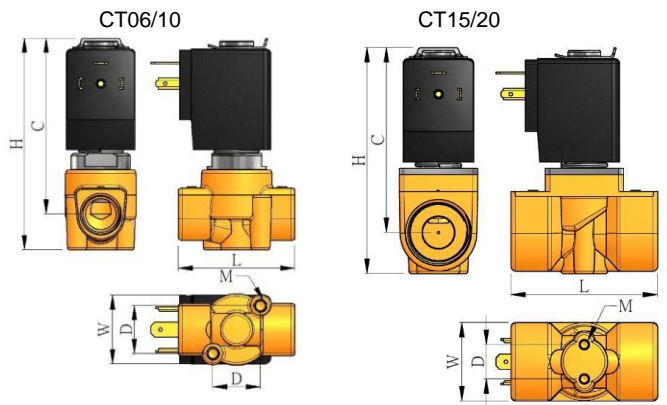
ELECTRICAL DATA						
Voltage (-10% + 10%) Continuous duty 100%		Coil	Power	Insulation class	Enclosure	Electrical connections
~ 24 - 48 - 110 - 230 - 380 (50/60 Hz)	= 12 - 24 - 48 (DC)	22003	18VA	H 180°C	IP 65 with connector	3 spades DIN 43650 DIN 40050 VDE 0110
~ 24 - 48 - 110 - 230 (50/60 Hz)			15 Watts			
= 12 - 24 - 48 - 110 - 230 (DC)	22005	24VA				
		18.5 Watts				

**CONSTRUCTION**

Body: Brass, Tube and internal parts: Stainless steel, Seals and gaskets: NBR (Optional EPDM, Viton or FFKM (Kalrez), Moulded coil: Resin

REPAIR KIT	
Coil	Coil size (22003 or 22005) + voltage
Complete armature assembly	KIT + valve part number

### OVERALL DIMENSIONS



Model	L	W	H	C	D	M	Kg
CT06	49	31	86	71	20	M5	0.51
CT10							0.49
CT15	56	32	88	74	21	M4	0.51
CT20	60		91				14

