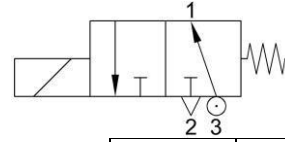


3/2 Direct Acting N.O. Plunger Series

Opening: 20~50ms

Closing: 40~100ms



Power Consumption	COIL#	#4	#3E
	AC (VA)	19.5	9.2
	Final Temp. °C	80.0	53.0
	DC (W)	15.0	10.0
	Final Temp. °C	103.0	80.0

SEAL TEMP. °C	#4	#3E
N:NBR	-5~80	
J:EPDM	-10~145	
V:FKM		
Z:FFKM	-20~160	

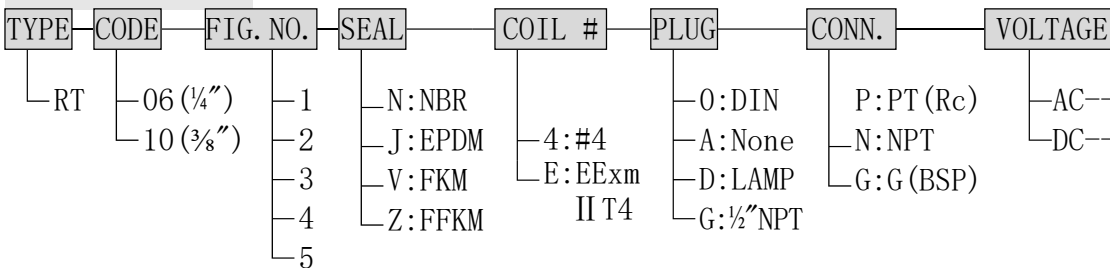
Ambient Temp.: -15°C~50°C (No Freezing)

SPECIFICATIONS

Brass Body, For Water, Low Pressure Steam, Air, Gas, Oil (below 50 mm²/s), Vacuum etc.

CODE (PIPE)	FIG. NO.	Orifice mm		Seal	COIL	Working Pressure 0~ bar		CV	Torr
		Body	Tube			#4	#3E		
06 (1/4")	1	1.3	1.6	N	#4	12		0.08	10 ⁻²
	2	1.6		J	#5	10			
	3	2.0		V	#3E	8			
10 (3/8")	4	2.5	2.0	Z	#3E	6		0.15	
	5	3.0				4			

TYPE INDICATION



★ EExm II T4 COIL w/o LAMP PLUG

EXAMPLES

Example 1: RT06-1-N-4-D-P AC220V

TYPE RT, ¼"PT, Body 1.3mm, Tube 1.6mm, NBR Seal, Nass #4 Coil, LAMP Plug, AC220V

Example 2: RT10-3-V-4-0-G DC24V

TYPE RT, G¾, Body 2.0 mm, Tube 1.6mm, FKM Seal, Nass #4 Coil, Standard Plug, DC24V

DIMENSIONS/WEIGHT

CODE (PIPE)	Size:mm							NET WEIGHT	
	L	W		H	C	D	M	g	
		#4	#3E					#4	#3E
06 (¼")	49	31	36	109.5	94.5	20	M5	458	746
10 (¾")				111.5	96.5			449	737

DIMENSIONS DRAWING

