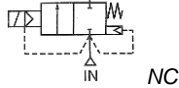


Media: air – water – light oil - steam  
 Pressure range: 0.5 to 80 Bar max  
 Media temperature: +180°C Max  
 Ambient temperature: -20°C to +60°C  
 Media viscosity: 50 centistokes max  
 Mounting: coil upright  
 Opening / Closing 200 mSec Max



# 2/2 Brass

## 3/8 - 2

### NORMALLY CLOSED

### 2 WAY SERVO ASSISTED

### 0.5 – 80 Bar

## TYPE SAHH



#### PRESSURE

Ø Port BSP	Ø Orifice (mm)	Flow Kv Ltr/ min	Pressure Rating (Bar) ΔP			Part Number
			Min	Max Steam	Max Air/ Water	
3/8	15	75	0.5	12	80	SA14HH + voltage
1/2	15	75	0.5	12	80	SA15HH + voltage
3/4	20	155	0.5	12	80	SA20HH + voltage
1	25	220	0.5	12	80	SA25HH + voltage
1 1/4	35	433	0.5	12	80	SAH35T + voltage
1 1/2	35	433	0.5	12	80	SAH40T + voltage
2	50	800	0.5	12	80	SAH50T + voltage

#### OPTIONS

IP68 (EN60529:1991+A1:2000) UL + CSA approved coil + IP67 LED connector DIN43650A  
 NPT Thread  
 Other custom made options, stainless steel body, degreased available upon request

Included

#### ELECTRICAL DATA

	Voltage (-10% + 10%) Continuous duty 100%	Coil	Power Consumption		Insulation class	Enclosure	Electrical connections
			Inrush	Holding			
~	24 – 110 – 230 (50 or 60 Hz) DIN	WPG2	18.7VA	15.3VA	H 180°C	IP 67 With Connector	3 spades DIN 43650 DIN 40050 VDE0110
=	12- 24 DC DIN		18 Watts				

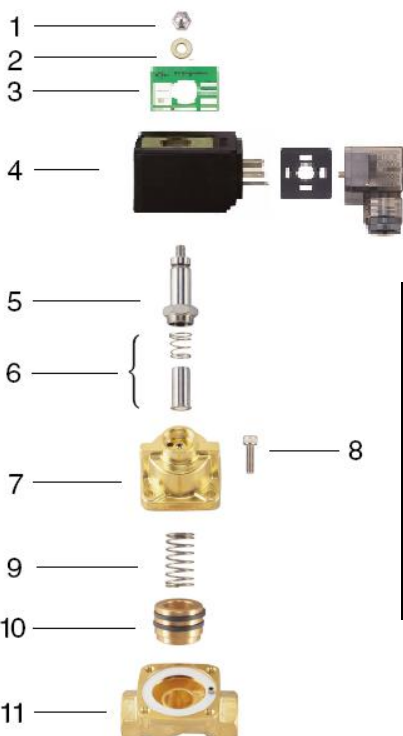
#### CONSTRUCTION

Body: Brass  
 Tube and Spring: 304 Stainless Armature: 430F Stainless Other internal parts: Stainless steel  
 Seals and gaskets: PTFE  
 Moulded coil: Resin

#### REPAIR KIT

Coil	WPG2 + voltage
Piston	SP210 + Valve Part Number

#### OVERALL DIMENSIONS



Model	A	B	C	G	H	Kg
SA14	67	48	123	1/2	15	1.1
SA15	67	48	123	1/2	15	1.1
SA20	96	72	149	3/4	25	1.53
SA25	96	72	149	1	25	1.85
SA35	120	113	178	1 1/4	33	3.3
SA40	120	113	178	1 1/2	33	3.25
SA50	150	120	203	2	40.5	6.8

Item	Part No:	Description
1	SP201-*	Nut
2	SP202-*	Washer
3	SP203-*	Name Plate
4	WPG2-*	Coil
5	SP205-*	Core Tube
6	SP206-*	Armature Core
7	SP207-*	Valve Bonnet
8	SP208-*	Bolt
9	SP209-*	Piston Spring
10	SP210-*	Piston
11	SP211-*	Valve Body

-\* = Model Number

