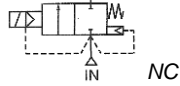


Media: air – water – light oil - steam
 Pressure range: 0.5 to 120 Bar max
 Media temperature: +180°C Max
 Ambient temperature: -20°C to +60°C
 Media viscosity: 50 centistokes max
 Mounting: coil upright
 Opening / Closing 200 mSec Max



2/2 Brass

3/8 – 1

NORMALLY CLOSED

2 WAY SERVO ASSISTED

0.5 – 120 Bar

TYPE SAHHH



PRESSURE

Ø Port BSP	Ø Orifice (mm)	Flow Kv Ltr/ min	Pressure Rating (Bar) ΔP			Part Number
			Min	Max Steam	Max Air/ Water	
3/8	15	75	0.5	12	120	SA14HHH + voltage
1/2	15	75	0.5	12	120	SA15HHH + voltage
3/4	20	155	0.5	12	120	SA20HHH + voltage
1	25	220	0.5	12	120	SA25HHH + voltage

OPTIONS

IP67 (EN60529:1991+A1:2000) UL + CSA approved Coil + IP65 LED Connector PG11 DIN43650A
 NPT Thread
 Other custom made options available upon request

ELECTRICAL DATA

Voltage (-10% + 10%) Continuous duty 100%	Coil	Power Consumption		Insulation class	Enclosure	Electrical connections
		Inrush	Holding			
~ 24 – 110 – 230 (50 or 60 Hz) DIN	WPG2	18.7VA	15.3VA	H 180°C	IP 65 With Connector	3 spades DIN 43650 DIN 40050 VDE0410
= 12 – 24 DC DIN		18 Watts				

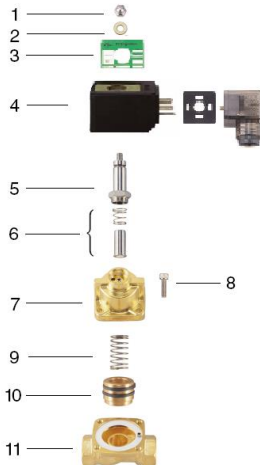
CONSTRUCTION

Body: Brass
 Tube and Spring: 304 Stainless Armature: 430F Stainless Other internal parts: Stainless steel
 Seals and gaskets: PTFE
 Moulded coil: Resin

REPAIR KIT

Coil	WPG2 + voltage
Piston	SP + Valve Part Number -PISTON
Armature	SP + Valve Part Number -ARMATURE

OVERALL DIMENSIONS



Item	Part No:	Description
1	SP201-*	Nut
2	SP202-*	Washer
3	SP203-*	Name Plate
4	WPG2-*	Coil
5	SP205-*	Core Tube
6	SP206-*	Armature Core
7	SP207-*	Valve Bonnet
8	SP208-*	Bolt
9	SP209-*	Piston Spring
10	SP210-*	Piston
11	SP211-*	Valve Body

-* = Model Number

Model	A	B	C	G	H	Kg
SA14	67	48	123	1/2	15	1.1
SA15	67	48	123	1/2	15	1.1
SA20	96	72	149	3/4	25	1.53
SA25	96	72	149	1	25	1.85

