

Media: air – inert gas
 Pressure range: 1.5 to 8 Bar max
 Media temperature: +50°C max
 Ambient temperature: -10°C to +60°C max
 Mounting: any position
 Weight (including coil): 1000g / 1200g

5/2 Stainless

1/4 - 1/2

5/2 SINGLE + D/ACTING

SERVO ASSISTED

1.5 – 8 Bar

TYPE SPU520



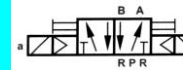
5/2 Way Spring Return SPU520S



Ø Port BSP	Ø Orifice (mm ²)	Pressure Rating (Bar) ΔP		Max Working	Part Number
		Min	Max		
1/4	35	1.5	8	10	SPU52002S + voltage
3/8	65	1.5	8	10	SPU52003S + voltage
1/2	65	1.5	8	10	SPU52004S + voltage



5/2 Way Double Acting SPU520D



Ø Port BSP	Ø Orifice (mm ²)	Pressure Rating (Bar) ΔP		Max Working	Part Number
		Min	Max		
1/4	35	1.5	8	10	SPU52002D + voltage
3/8	65	1.5	8	10	SPU52003D + voltage
1/2	65	1.5	8	10	SPU52004D + voltage



OPTIONS

IP65 Coil & Connector PG9 – DIN 43650 B & manual over ride (optional flying lead wire coil)
 NPT Thread
 ATEX 22001EX Coil: ATEX EExmII T4 II 2G & 2D IP65 T130°C

ELECTRICAL DATA

Voltage (-10% + 15%) Continuous duty 100%	Coil	Power Consumption		Insulation class	Enclosure	Electrical connections
		Inrush	Holding			
~ 24 – 48 – 110 – 230 (50 or 60 Hz)	22001	7.6 VA	6 VA	F 155°C	IP 65 with connector	3 spades DIN 43650B DIN 40050 VDE 0110
= 12 - 24 – 48 - 110 (DC)		4.5 Watts				

CONSTRUCTION

Body: 316 stainless steel, Tube and internal parts: Stainless steel
 Seals and gaskets: NBR, Moulded coil: Resin

OVERALL DIMENSIONS

